

PHILIPS

Stellarex

Drug coated 0.035" and
0.014" OTW angioplasty
balloon family

The clear DCB choice



Featuring **EnduraCoat**
technology

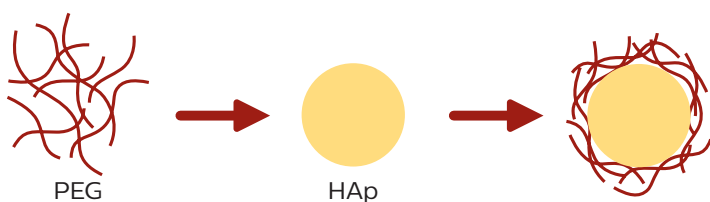


Differentiated technology - next-generation EnduraCoat

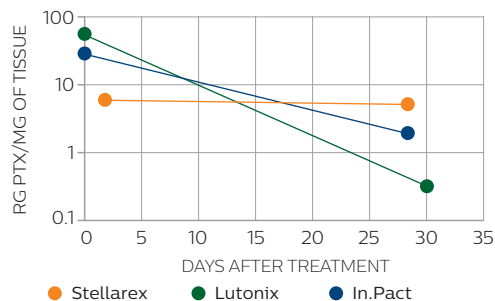
Stellarex EnduraCoat has proven performance in severely calcified lesions and complex patients with multiple comorbidities.

- Hybrid paclitaxel offers prompt drug transfer and sustained tissue residency through 28 day restenotic window¹
- Excipient polyethylene glycol (PEG) offers excellent adhesion and durability to protect low dose paclitaxel^{2,3}
- Reduces drug loss during transit, relieving clinicians of transit time requirements^{4,5}

Proven performance in calcium



High transfer efficiency and effective residency⁶



Based on animal testing

- PEG forms strong ionic bonds with hydroxyl apatite (HAp), the primary component of calcified atherosclerotic lesions.⁷
- PEG's affinity for HAp may result in limited PTX washout in the presence of calcium.
- PEG may protect PTX, giving it time to be absorbed into vessel when calcium is present.

Hybrid
paclitaxel

+

PEG
excipient

=

Top-tier clinical
outcomes[†]

Why an effective low drug dose matters

Dose excess and particulate downstream possibly results in a delay of wound healing, loss of microcirculation and creation of aneurysms⁹⁻¹². Stellarex is the only low dose DCB with a statistically significant treatment effect in femoropopliteal lesions **beyond 2 years**¹³.

2 $\mu\text{g}/\text{mm}^2$

Only low DCB drug dose
still effective in SFA
at 3 years¹³

- In.Pact has a 75% higher drug dose than Stellarex^{4,8}
- Compared to Stellarex, In.Pact loses 2.7 times more drug (μg) during tracking to the deployment site⁵
- In.Pact coating visually flakes off during device prep⁵
- Lutonix low dose is mostly amorphous paclitaxel, which may lead to short-term tissue residency²

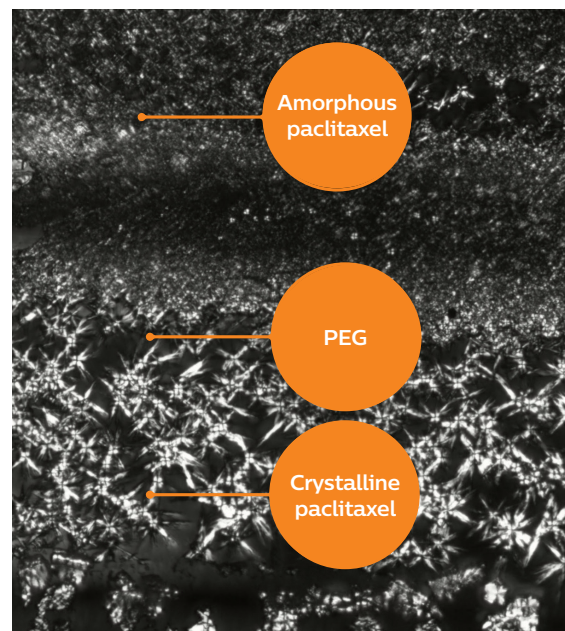


Image on file at Philips.

Track

PEG offers exceptional durability during handling, tracking and inflation, helping prevent premature drug loss^{2,5}

Deliver

EnduraCoat achieves uniform and efficient drug transfer¹



















Sustain

Hybrid paclitaxel provides prompt drug availability with amorphous and sustained tissue Residency with crystalline formulation¹

Stellarex robust clinical program for ATK and BTK

Core-lab adjudication and over 2500 patients treated in clinical trials

Illuminate Clinical Program

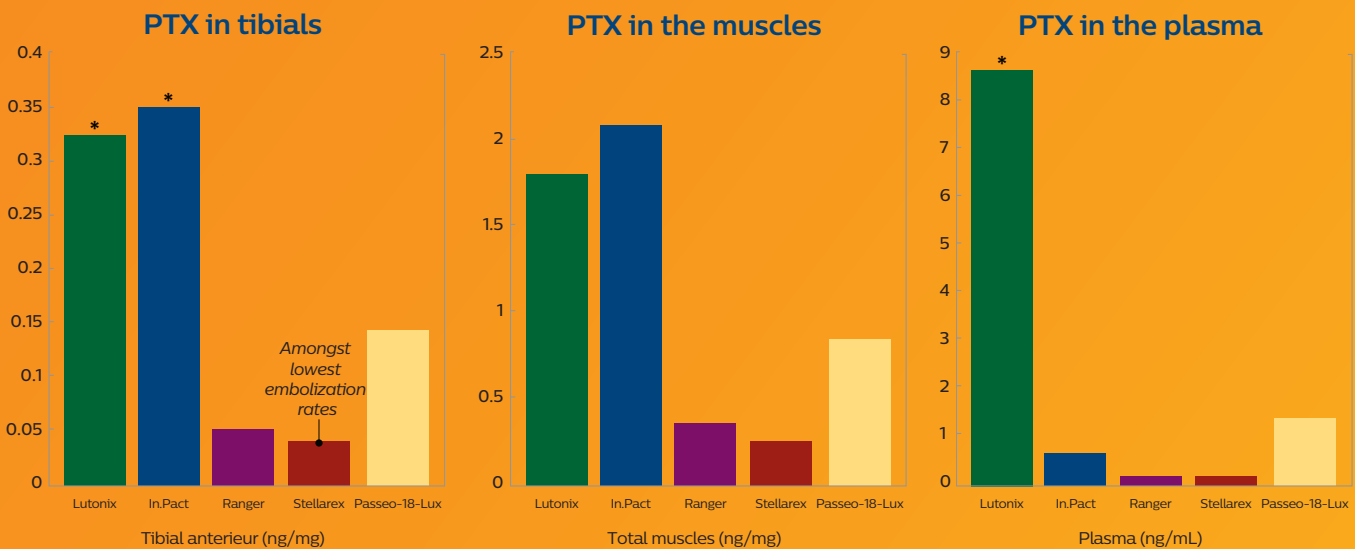
| | | | | | |
|-------------------------------|---|-----------------|---|----------|-----------|
| ILLUMENATE FIH |  | 80 patients |  | 3 sites | |
| ILLUMENATE EU RCT |  | 328 patients |  | 18 sites | |
| ILLUMENATE Pivotal |  | 300 patients |  | 43 sites | |
| ILLUMENATE Global |  | 371 patients |  | 37 sites | |
| ISR Cohort |  | 130 patients |  | 26 sites | |
| ILLUMENATE PK |  | 25 patients |  | 2 sites | |
| ILLUMENATE BTK |  | 354 patients |  | 37 sites | Enrolling |
| ILLUMENATE EU BTK POST MARKET |  | 75 patients |  | 10 sites | Enrolling |
| SAVER-E-Registry |  | 1,500+ patients |  | 70 sites | Enrolling |

 United States  Europe  Australia/New Zealand

Minimal PTX embolization with Stellarex shown in an independent pre-clinical study ¹⁴

- Fully independent pre-clinical study confirms low embolization rates with Stellarex.
- Results may have implications while choosing a DCB, especially for BTK and/or CLI.

Blinded evaluation of ptx particles and dose



Courtesy of R. Coscas, Boitet A., oral presentation, LINC 2018.
Based on animal testing: Rabbit model / DCB deployed in Aorta. Blinded evaluation of ptx particles and dose by HPLC (5 different DCBs, n=25)

Top-tier patency and safety with the lowest effective drug dose in all SFA patients – common to complex*†

Common patients in EU RCT study¹³:

- Only low dose DCB reporting 3yr patency
- Statistically significant improvement over PTA (67.5% vs. 59.9%, $p=0.05$)¹³

Complex patients in US Pivotal study¹³ – Stellarex effective in calcium:

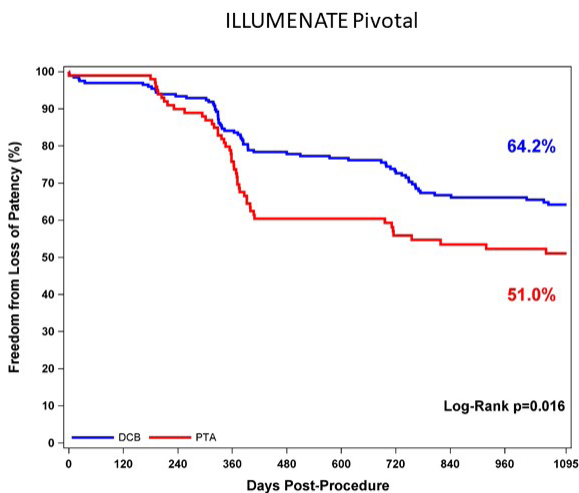
- Statistically superior patency even in most complex patients studied in DCB RCT (64.2% vs. 51.0%, $p=0.016$)¹³
- Highest rate of severely calcified lesions: five times the rate of severe calcium studied in competitive trials¹⁵
- Clinically relevant difference in CD-TLR at 4 years: 28.2% Stellarex vs. 34.1% PTA ($p=0.343$)¹⁶

Top-tier primary patency in complex patients with up to

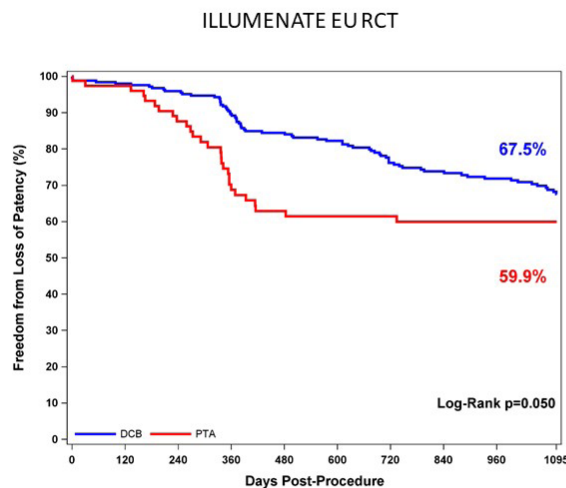
43%
less drug load^{8,13}

2 ILLUMENATE RCTs: primary patency through 3 years^{13,16}

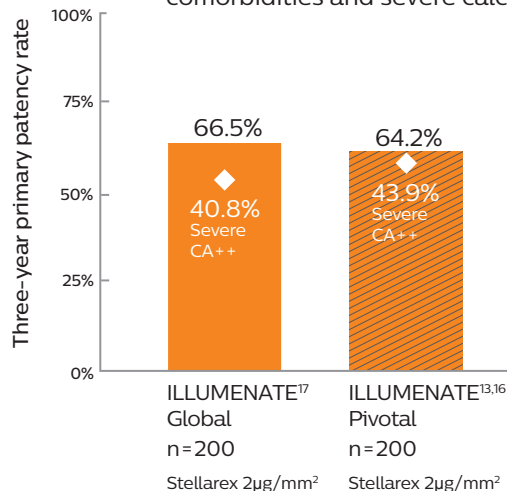
Complex patients*



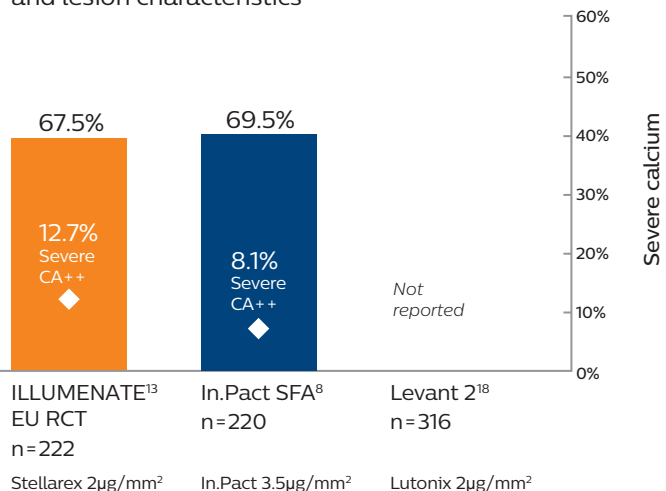
Common patients



Complex patients* – more comorbidities and severe calcium



Common patients – similar patient and lesion characteristics

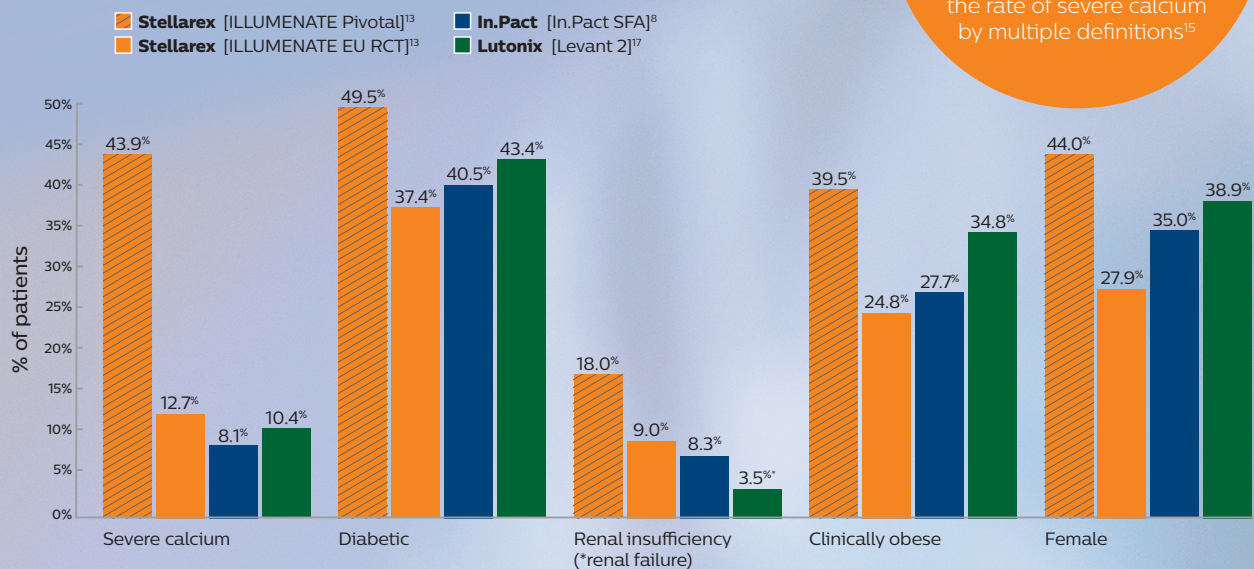


Competitor studies are independent clinical trials with different protocols and definitions. Therefore, they are not head-to-head comparisons, and data presented cannot be directly compared. Calcium definitions may vary from study to study, and the rates presented here are based on those used and reported in each respective study. Primary patency based on Kaplan-Meier estimates.

*Complex patients refers to high rates of severe calcium, diabetes and renal insufficiency. Primary patency based on Kaplan-Meier estimates.

Stellarex 0.035" well suited for complex patients*†

Stellarex continues to perform in patients with the highest rates of complex comorbidities—even through three years.



Data overview for informational purposes only and not for head-to-head comparison. Calcium definitions may vary from study to study, and the rates presented here are based on those used and reported in each respective study.

* Complex patients refers to high rates of severe calcium, diabetes and renal insufficiency.

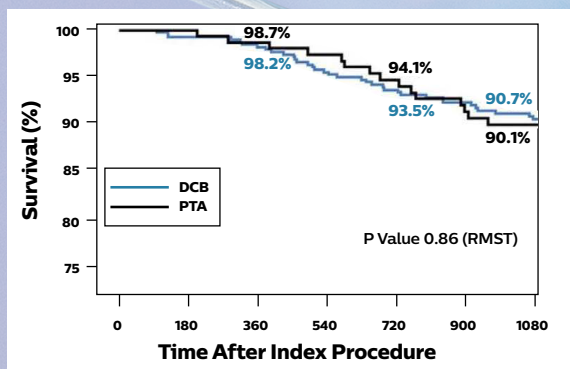
Proven safe in SFA patients in the long run†

- Zero device-related death† reported in over 2,300 clinical SFA patients through 3 years¹⁹
- No mortality signal†† in pooled ILLUMENATE RCT analysis^{19,20}
- No differences in all-cause mortality through 4 years in ILLUMENATE US Pivotal¹⁶

Published patient-level meta-analysis shows no significant differences in mortality rates through 3 years²⁰

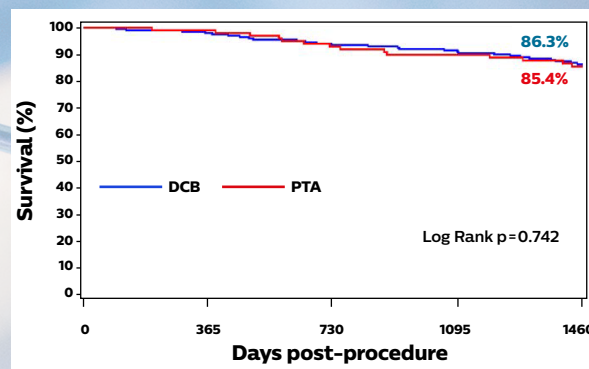
No mortality signal continues at 4 years¹⁶

Survival at 3 years in the pooled ILLUMENATE RCT analysis



| Patients at Risk | | | | | | | |
|------------------|-----|-----|-----|-----|-----|-----|-----|
| DCB | 419 | 397 | 384 | 363 | 353 | 333 | 301 |
| PTA | 170 | 160 | 156 | 148 | 142 | 134 | 115 |

Survival through 4 years in ILLUMENATE US Pivotal¹⁶



| Patients at Risk | | | | | |
|------------------|-----|-----|-----|-----|-----|
| DCB | 100 | 196 | 186 | 181 | 126 |
| PTA | 200 | 99 | 91 | 85 | 62 |

†† No statistically significant difference in mortality

†Data from independent CEC (clinical events committee) adjudication of all events resulting in death across all studies.

Stellarex for above-the-knee (ATK) treatment

0.035" (0.89mm) OTW drug-coated angioplasty balloon

| Product catalogue number | Sheath size (Fr) | Balloon diameter (mm) | Balloon length (mm) | Shaft length (cm) | Nominal pressure (atm) | Rated burst pressure (atm) |
|--------------------------|------------------|-----------------------|---------------------|-------------------|------------------------|----------------------------|
| A35SX040040080 | 6 | 4 | 40 | 80 | 10 | 20 |
| A35SX040060080 | 6 | 4 | 60 | 80 | 10 | 20 |
| A35SX040080080 | 6 | 4 | 80 | 80 | 10 | 20 |
| A35SX040100080 | 6 | 4 | 100 | 80 | 10 | 20 |
| A35SX040120080 | 6 | 4 | 120 | 80 | 10 | 20 |
| A35SX040150080 | 6 | 4 | 150 | 80 | 10 | 20 |
| A35SX040200080 | 6 | 4 | 200 | 80 | 10 | 20 |
| A35SX050040080 | 6 | 5 | 40 | 80 | 10 | 18 |
| A35SX050060080 | 6 | 5 | 60 | 80 | 10 | 18 |
| A35SX050080080 | 6 | 5 | 80 | 80 | 10 | 18 |
| A35SX050100080 | 6 | 5 | 100 | 80 | 10 | 18 |
| A35SX050120080 | 6 | 5 | 120 | 80 | 10 | 16 |
| A35SX050150080 | 6 | 5 | 150 | 80 | 10 | 16 |
| A35SX050200080 | 6 | 5 | 200 | 80 | 10 | 16 |
| A35SX060040080 | 6 | 6 | 40 | 80 | 8 | 14 |
| A35SX060060080 | 6 | 6 | 60 | 80 | 8 | 14 |
| A35SX060080080 | 6 | 6 | 80 | 80 | 8 | 14 |
| A35SX060100080 | 6 | 6 | 100 | 80 | 8 | 14 |
| A35SX060120080 | 6 | 6 | 120 | 80 | 8 | 12 |
| A35SX060150080 | 6 | 6 | 150 | 80 | 8 | 12 |
| A35SX060200080 | 6 | 6 | 200 | 80 | 8 | 11 |
| A35SX040040135 | 6 | 4 | 40 | 135 | 10 | 20 |
| A35SX040060135 | 6 | 4 | 60 | 135 | 10 | 20 |
| A35SX040080135 | 6 | 4 | 80 | 135 | 10 | 20 |
| A35SX040100135 | 6 | 4 | 100 | 135 | 10 | 20 |
| A35SX040120135 | 6 | 4 | 120 | 135 | 10 | 20 |
| A35SX040150135 | 6 | 4 | 150 | 135 | 10 | 20 |
| A35SX040200135 | 6 | 4 | 200 | 135 | 10 | 20 |
| A35SX050040135 | 6 | 5 | 40 | 135 | 10 | 18 |
| A35SX050060135 | 6 | 5 | 60 | 135 | 10 | 18 |
| A35SX050080135 | 6 | 5 | 80 | 135 | 10 | 18 |
| A35SX050100135 | 6 | 5 | 100 | 135 | 10 | 18 |
| A35SX050120135 | 6 | 5 | 120 | 135 | 10 | 16 |
| A35SX050150135 | 6 | 5 | 150 | 135 | 10 | 16 |
| A35SX050200135 | 6 | 5 | 200 | 135 | 10 | 16 |
| A35SX060040135 | 6 | 6 | 40 | 135 | 8 | 14 |
| A35SX060060135 | 6 | 6 | 60 | 135 | 8 | 14 |
| A35SX060080135 | 6 | 6 | 80 | 135 | 8 | 14 |
| A35SX060100135 | 6 | 6 | 100 | 135 | 8 | 14 |
| A35SX060120135 | 6 | 6 | 120 | 135 | 8 | 12 |
| A35SX060150135 | 6 | 6 | 150 | 135 | 8 | 12 |
| A35SX060200135 | 6 | 6 | 200 | 135 | 8 | 11 |

Stellarex for below-the-knee (BTK) treatment

0.014" (0.3589mm) OTW drug-coated angioplasty balloon

| Product catalogue number | Sheath size (Fr) | Balloon diameter (mm) | Balloon length (mm) | Shaft length (cm) | Nominal pressure (atm) | Rated burst pressure (atm) |
|--------------------------|------------------|-----------------------|---------------------|-------------------|------------------------|----------------------------|
| AA14SX025040090 | 4 | 2.5 | 40 | 90 | 8 | 14 |
| AA14SX025080090 | 4 | 2.5 | 80 | 90 | 8 | 14 |
| AA14SX025150090 | 4 | 2.5 | 150 | 90 | 8 | 14 |
| AA14SX030040090 | 4 | 3 | 40 | 90 | 8 | 14 |
| AA14SX030080090 | 4 | 3 | 80 | 90 | 8 | 14 |
| AA14SX030150090 | 4 | 3 | 150 | 90 | 8 | 14 |
| AA14SX020040150 | 4 | 2 | 40 | 150 | 8 | 14 |
| AA14SX020080150 | 4 | 2 | 80 | 150 | 8 | 14 |
| AA14SX020150150 | 4 | 2 | 150 | 150 | 8 | 14 |
| AA14SX025040150 | 4 | 2.5 | 40 | 150 | 8 | 14 |
| AA14SX025080150 | 4 | 2.5 | 80 | 150 | 8 | 14 |
| AA14SX025150150 | 4 | 2.5 | 150 | 150 | 8 | 14 |
| AA14SX030040150 | 4 | 3 | 40 | 150 | 8 | 14 |
| AA14SX030080150 | 4 | 3 | 80 | 150 | 8 | 14 |
| AA14SX030150150 | 4 | 3 | 150 | 150 | 8 | 14 |
| AA14SX035040150 | 4 | 3.5 | 40 | 150 | 8 | 14 |
| AA14SX035080150 | 4 | 3.5 | 80 | 150 | 8 | 14 |
| AA14SX035150150 | 4 | 3.5 | 150 | 150 | 8 | 14 |
| AA14SX040040150 | 4 | 4 | 40 | 150 | 8 | 14 |
| AA14SX040080150 | 4 | 4 | 80 | 150 | 8 | 14 |
| AA14SX040150150 | 4 | 4 | 150 | 150 | 8 | 14 |

- 0.014" DCB built on a clinically proven SFA enduracoat coating technology.
- Low tip profile (0.46 mm) designed to support trackability and lesion crossing in distal vessel beds.
- High coating stability and low dose may fulfil requirements specific to BTK and CLI disease.

† All discussed clinical results refer to patients with femoropopliteal lesions

Important Safety Information

Indications, contraindications, warnings and instructions for use can be found in the product labeling supplied with each device. Information for the use only in countries with applicable health authority product registrations.

1. Granada JF. Future directions, clinical applications and local drug delivery technologies. Presented at the Transcatheter Cardiovascular Therapeutics (TCT) 25th Annual Scientific Symposium; October 27-November 1, 2013; San Francisco, California. Slide 7, 15.
2. Mark J, et al. Physical properties of polymers. Cambridge University Press. 3rd ed. 2004.
3. Adamson AW. Physical Chemistry of Surfaces fourth ed. New York: John Wiley and Sons, 1982.
4. Stellarex IFU. P015457.
5. Data on file. D044595-00.
6. Superimposed PK curves from different datasets: Melder R, EuroPCR 2012, Yazdani, et al. Catheterization and Cardiovascular Interventions 014;83:132-140. Stellarex: Data on file. Spectranetics Document. 2014. Spectranetics Pre-clinical Animal Study ADO097.
7. Venkatasubbu GD, et al. Surface modification and paclitaxel drug delivery of folic acid modified polyethylene glycol functionalized hydroxyapatite nanoparticles. Powder Technology. 2013;235:437-442.
8. Laird, et al. J Am Coll Cardio. 2015;66:2329-2338. In.Pact Summary of Safety and Effectiveness Data (SSED). Medtronic In.Pact Instructions for Use, M052624T001 Rev 1F.
9. Diamantopoulos A, Gupta Y, Zayed H, Katsanos K. Paclitaxel-coated balloons and aneurysm formation in peripheral vessels. J Vasc Surg. 2015 Nov;62(5):1320-2
10. Schmidt A et al. First experience with drug-eluting balloons in infrapopliteal arteries: restenosis rate and clinical outcome. J Am Coll Cardiol. 2011 Sep 6;58(11):1105-9

INDICATIONS FOR USE

The Stellarex 0.035" OTW drug-coated angioplasty balloon is indicated for the treatment of de-novo or restenotic lesions up to 220 mm in length in the superficial femoral or popliteal arteries to establish blood flow and to maintain vessel patency.

The Stellarex 0.014" OTW drug-coated angioplasty balloon is indicated for the treatment of de-novo or restenotic lesions up to 270mm in length (single-vessel) or 320mm in length (multi-vessel) in native popliteal and infra-popliteal arteries to establish blood flow and to maintain vessel patency.

11. Liistro F et al. Drug-eluting balloon in peripheral intervention for below the knee angioplasty evaluation (DEBATE-BTK): a randomized trial in diabetic patients with critical limb ischemia. Circulation. 2013 Aug 6;128(6):615-21
12. Zeller T, et al. IN.PACT DEEP Trial Investigators. Drug-eluting balloon versus standard balloon angioplasty for infrapopliteal arterial revascularization in critical limb ischemia: 12-month results from the IN.PACT DEEP randomized trial. J Am Coll Cardiol. 2014 Oct 14;64(15):1568-76
13. Mathews SJ, Stellarex in the Treatment of the SFA and Popliteal: Late-Breaking 3-Year Data, oral presentation, NCVH June 2019
14. Coscas R, Boitet A. Local and distal PTX effects : Preclinical results with different DCBs, oral presentation LINC 2018.
15. Holden A. Comparing Trials Data in the Management of Calcified Arteries. Charing Cross 2018. April 24-26, 2018; London, UK.
16. Lyden S, Safety And Effectiveness Of The Stellarex DCB With Low Dose Paclitaxel: 4 Year Results from the ILLUMENATE Pivotal trial, oral presentation, LINC Jan 2020, Leipzig, Germany
17. Lyden S, ILLUMENATE trial update, oral presentation, AMP Aug 2019.
18. Bard Lutonix Instructions for Use, BAW1387400r3.
19. Lyden, S. LINC, 2019. Long-term safety data from the Stellarex DCB program Jan. 22, 2019. Leipzig, Germany.
20. Gray WA, Mortality assessment of ptx coated balloons - patient-level meta-analysis of the ILLUMENATE clinical program at 3 years, Circulation, 140:1145-1155, Oct 2019

Learn more and come visit us at www.stellarexdcb.com