

PHILIPS

dStream
FootAnkle 8ch

MR coils



Designed for **large coverage imaging**

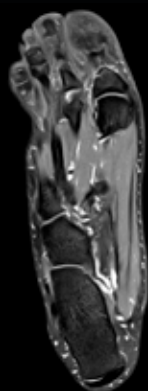
Key benefits

- Designed for high resolution visualization of detailed cartilage structures
- Easy patient set up, even for tall patients
- Foot can be positioned in a comfortable 15 degree angle

A ski-boot-shaped coil designed for optimum coverage and high resolution visualization of the ankle and entire foot down to the toes. The coil design and element layout allow for either large field of view (FOV) imaging of the whole foot or small FOV high resolution imaging of ankle joints. The coil is easy to set up and can be used with the patient's foot positioned vertically.

dStream **FootAnkle 8ch coil**

Systems	Prodiva 1.5T
Coverage	30 cm
Maximum number of channels	8
Main applications	Foot, Ankle, Toes
Coil solution type	Dedicated
Data sampling	dStream digital broadband
Coil connection	dStream Interface
SENSE parallel imaging	dS SENSE enhanced parallel imaging performance



PDW mDIXON XD TSE Tra

TR1800ms, TE25ms
Resolution: 0.50X0.63X3.00mm
FOV 240mm
Scan time: 4:52min
Ingenia Prodiva 1.5T



T1W TSE Cor

TR554ms, TE10ms
Resolution: 0.50X0.55X3.00mm
FOV 150mm
Scan time: 2:18min
Ingenia Prodiva 1.5T



T1W mDIXON XD TSE Sag

TR570.4ms, TE9.4ms
Resolution: 0.52X0.65X3.00mm
FOV 220mm
Scan time: 4:28min
Ingenia Prodiva 1.5T

This material is not for distribution in the USA.

© 2020 Koninklijke Philips N.V. All rights reserved.
Specifications are subject to change without notice.
Trademarks are the property of Koninklijke Philips
N.V. or their respective owners.

4522 991 57161 * AUG 2020



How to reach us
healthcare@philips.com
www.philips.com/healthcare

More information
www.philips.com/mrcoils