



PHILIPS

bFFE XD

MR Clinical application

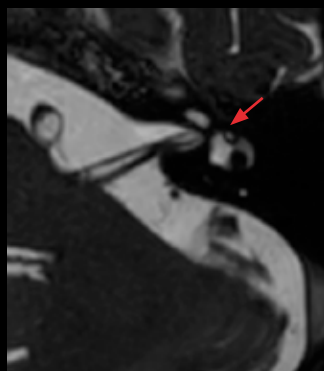
Expanding clinical applications of balanced FFE

bFFE XD expands the clinical application of bFFE towards better visualization of fine structures. It delivers robust 3D, high resolution imaging with a spatial resolution up to $0.5 \times 0.5 \times 0.5 \text{ mm}^1$ in less than 6 minutes for inner ear applications, with reduced banding artifacts compared to conventional Philips balanced FFE.

1 For 3.0T systems. For 1.5T systems $0.6 \times 0.6 \times 0.6 \text{ mm}$.

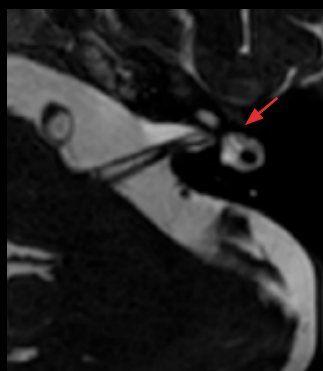
bFFE XD

Field strength	1.5T and 3.0T Ingenia MR systems
Main applications	Inner ear
Sequence	Balanced FFE (bFFE)
Image contrast	T2*/T1 contrast
Speed	Compatible with dS SENSE and Compressed SENSE
Image quality	High resolution imaging with reduced black banding artifacts



bFFE

Resolution: 0.6 x 0.6 x 0.6 mm
Scan time: 4:38 min
Ingenia 1.5T



bFFE XD

Resolution: 0.6 x 0.6 x 0.6 mm
Scan time: 3:35 min
Ingenia 1.5T



bFFE XD

Resolution: 0.6 x 0.6 x 0.6 mm
Scan time: 3:35 min
Ingenia 1.5T

