

PHILIPS

dStream WholeBody

MR coils



Integrated solution for whole body MR imaging

Key benefits

- Full anatomic coverage up to 200 cm
- Conforming and strapless design to promote patient comfort
- Digitization in the coils for increased SNR
- dS SENSE to speed up acquisition in all imaging directions

An integrated coil solution for whole body and peripheral vascular related imaging. It includes two dStream Torso coils. Combined with the dStream Posterior, HeadNeck and dStream Base it enables 200 cm coverage with a maximum of 108 channels. The flexible, lightweight easy-to-position dStream Torso coil is designed to conform both in right-left and foot-head directions to support virtually all patients. This allows large coverage and comfortable strap-free operation.

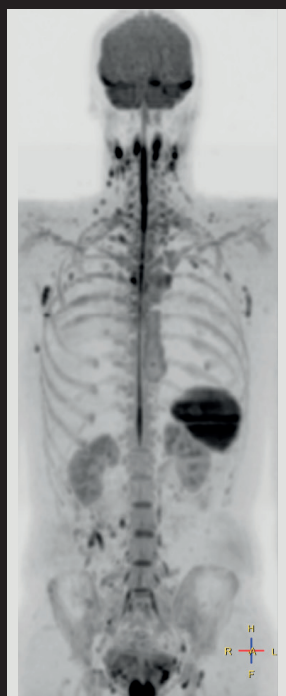
dStream **WholeBody coil**

Systems	1.5T and 3.0T systems with dStream
Coverage	200 cm
Maximum number of channels	108
Main applications	Whole Body, Abdomen, Pelvis, Cardiac, Peripheral vascular
Coil solution type	Integrated
Data sampling	dStream digital broadband
Coil connection	Triple FlexConnect
SENSE parallel imaging	dS SENSE enhanced parallel imaging performance



T2w TSE

Resolution: 1.2 x 1.5 x 6.0 mm
Scan time: 0:24 min /station
Achieva dStream 1.5T



DWIBS

Resolution: 5.0 x 5.0 x 6.0 mm
Scan time: 1:58 min /station
Achieva dStream 1.5T



T1w TSE

Resolution: 1.6 x 2.1 x 6.0 mm
Scan time: 1:32 min /station
Ingenia 1.5T



STIR

Resolution: 1.6 x 2.6 x 6.0 mm
Scan time: 1:20 min /station
Ingenia 1.5T

© 2018 Koninklijke Philips N.V. All rights reserved.
Specifications are subject to change without notice.
Trademarks are the property of Koninklijke Philips
N.V. or their respective owners.

4522 991 34621 * APR 2018



How to reach us
healthcare@philips.com
www.philips.com/healthcare

More information
www.philips.com/mrcoils