

PHILIPS

dStream
HandWrist 16ch

MR coils



Designed for **high resolution imaging**

Key benefits

- Close fit to hand and wrist for high signal-to-noise ratio
- One-piece hinged design for easy patient setup
- Comfortable positioning at the patient's side

Coil that closely fits the left or right hand and wrist for high signal-to-noise ratio (SNR). This design provides the high SNR needed to acquire images with a small and larger field of view (FOV). It has a one piece, ovoid, hinged design for easy patient set up. High quality imaging can be obtained with the coil at the patient's side. The coil attaches to a rigid base plate for fixation to reduce patient motion artifacts.

dStream **HandWrist 16ch coil**

Systems	1.5T and 3.0T systems with dStream
Coverage	10 cm for wrist, 28 cm for hand and wrist
Maximum number of channels	16
Main applications	Hand, wrist
Coil solution type	Dedicated
Data sampling	dStream digital broadband
Coil connection	dStream Interface
SENSE parallel imaging	dS SENSE enhanced parallel imaging performance



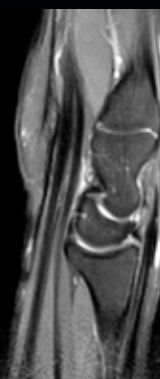
Coronal T1w TSE

Resolution: 0.4 x 0.4 x 2.5 mm
Scan time: 3:00 min
Ingenia 1.5T



Coronal mFFE

Resolution: 0.5 x 0.5 x 2.5 mm
Scan time: 3:10 min
Ingenia 1.5T



Sagittal PDw SPAIR

Resolution: 0.5 x 0.5 x 2.5 mm
Scan time: 4:15 min
Ingenia 1.5T

© 2018 Koninklijke Philips N.V. All rights reserved.
Specifications are subject to change without notice.
Trademarks are the property of Koninklijke Philips N.V. or their respective owners.

4522 991 36371 * JUN 2018



How to reach us
healthcare@philips.com
www.philips.com/healthcare

More information
www.philips.com/mrcoils