

PHILIPS

dStream Breast 16ch

MR coils



Designed for **superb diagnostic performance**

Key benefits

- Designed for high spatial and temporal resolution

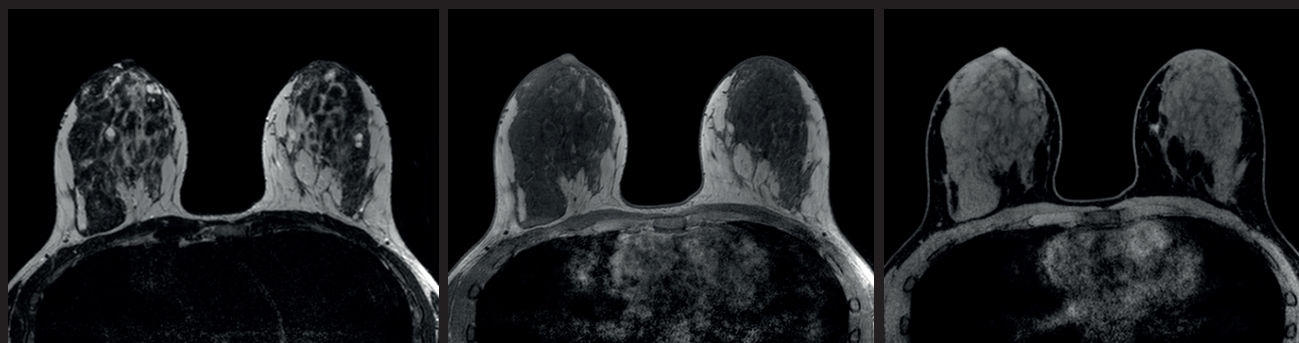
- Provides coverage deep into the axilla area

- Promotes excellent patient comfort with headrest and abdomen ramp

A dedicated closed design breast coil which can be used alone or in combination with FlexTrak Mammo. The coil is designed to deliver high performance in coverage, image resolution and imaging speed. An adjustable head rest with patient mirror and soft patient ramp are included to promote patient comfort.

dStream **Breast 16ch coil**

Systems	1.5T and 3.0T systems with dStream
Coverage	Bilateral
Maximum number of channels	16
Main applications	Breast
Coil solution type	Dedicated
Data sampling	dStream digital broadband
Coil connection	dStream Interface
SENSE parallel imaging	dS SENSE enhanced parallel imaging performance



Axial T2w TSE

Resolution: 1.0 x 1.0 x 1.8 mm

Scan time: 3:00 min

Ingenia 3.0T

Axial T1w TFE 3D

Resolution: 0.9 x 0.9 x 0.9 mm

Scan time: 0:38 min

Ingenia 3.0T

Axial eTHRIVE

Resolution: 0.9 x 0.9 x 0.9 mm

Scan time: 1:31 min

Ingenia 3.0T

Courtesy: St. Jan Hospital, Bruges, Belgium

© 2018 Koninklijke Philips N.V. All rights reserved.
Specifications are subject to change without notice.
Trademarks are the property of Koninklijke Philips
N.V. or their respective owners.

4522 991 34381 * APR 2018



How to reach us

healthcare@philips.com
www.philips.com/healthcare

More information

www.philips.com/mrcoils