



Designed to **advance body applications**

Key benefits

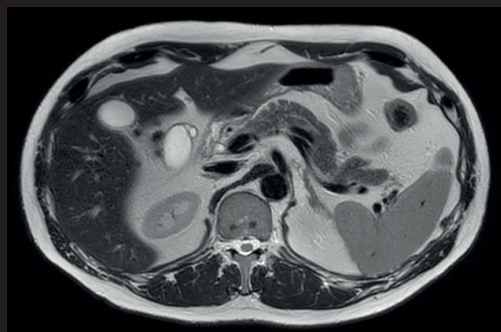
- Large 60 cm coverage for ease of patient positioning
- Conforming and strapless design to promote patient comfort
- Digitization in the coil for increased SNR
- dS SENSE to speed up acquisition in all imaging directions

An integrated coil solution for abdomen and peripheral vascular related imaging. Combined with the dStream Posterior coil it allows 60 cm coverage with up to 32 channels.

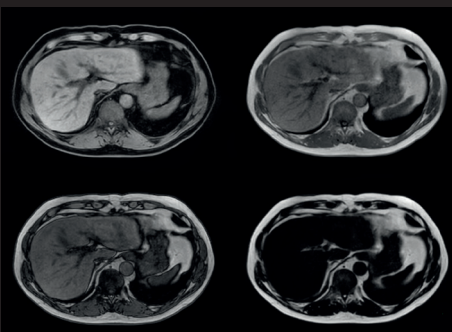
The flexible, lightweight easy-to-position dStream Torso coil is designed to conform both in right-left and foot-head directions to support virtually all patients. This allows large coverage and comfortable strap-free operation. dStream Torso features digital transmission without losses in the RF chain and provides enhanced signal-to-noise ratio (SNR) and dS SENSE parallel imaging performance.

dStream **Torso coil**

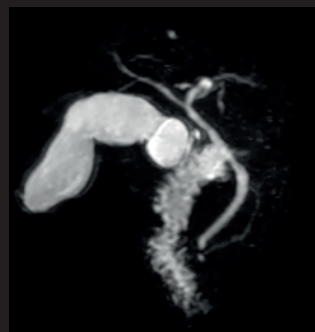
Systems	1.5T and 3.0T systems with dStream
Coverage	60 cm
Maximum number of channels	32
Main applications	Abdomen, Pelvis, Cardiac, Peripheral vascular
Coil solution type	Integrated
Data sampling	dStream digital broadband
Coil connection	Single Flexconnect
SENSE parallel imaging	dS SENSE enhanced parallel imaging performance



Axial T2w MultiVane XD
Resolution: 1.2 x 1.2 x 3.0 mm
Scan time: 2:36 min
Ingenia 1.5T



Axial mDIXON FFE
(Water only, In Phase, Out Phase, Fat only)
Resolution: 2.0 x 2.0 x 5.0 mm
Scan time: 0:10 min (dS SENSE 6)
Ingenia 1.5T



3D MRCP (MIP)
Resolution: 1.4 x 1.9 x 500.0 mm
Scan time: 0:17 min
Ingenia 1.5T

Courtesy: Radiologie am St Jozef Stift, Bremen, Germany

