

PHILIPS

dStream
Shoulder 16ch

MR coils



Designed for **high quality shoulder imaging**

Key benefits

- Digitization in the coil for increased SNR
- Adjustable design promotes a comfortable fit for either left or right shoulder
- High signal uniformity with excellent penetration into labrum

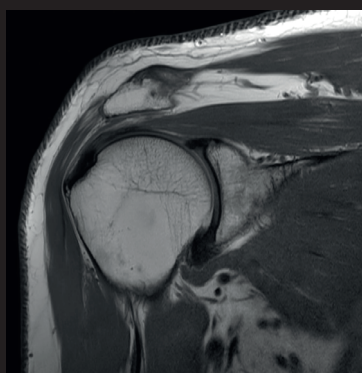
Coil designed for high image quality throughout the shoulder joint, with excellent penetration into the labrum. The coil consists of a base plate and an adjustable anterior part which can be raised and tilted for comfortable patient positioning. The coil can be positioned on the left or the right side of the table to scan the right or the left shoulder.

dStream **Shoulder 16ch coil**

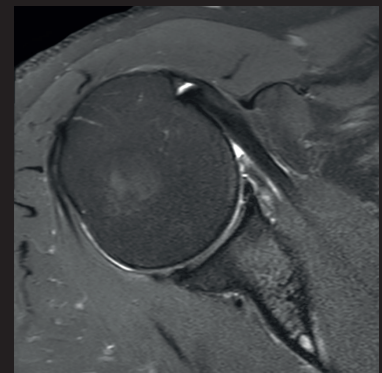
| | |
|----------------------------|--|
| Systems | 1.5T and 3.0T systems with dStream |
| Maximum number of channels | 16 |
| Coverage | 18 cm in left/right direction |
| Main applications | Shoulder |
| Coil solution type | Dedicated |
| Data sampling | dStream digital broadband |
| Coil connection | dStream Interface |
| SENSE parallel imaging | dS SENSE enhanced parallel imaging performance |



Coronal PDw TSE
Resolution: 0.4 x 0.5 x 3.0 mm
Scan time: 2:45 min
Ingenia 1.5T



Coronal PDw TSE
Resolution: 0.3 x 0.6 x 3.0 mm
Scan time: 3:32 min
Ingenia 3.0T



Axial T2w SPAIR
Resolution: 0.4 x 0.7 x 3.5 mm
Scan time: 3:18 min
Ingenia 3.0T

