

# PHILIPS

dStream  
HeadNeckSpine

MR coils



## Integrated solution for **neuro and neurovascular exams**

### Key benefits

---

- Digitization in the coil for increased SNR
  - Improved coil positioning and SNR due to flexible neck flap
  - Fast and easy setup with cable-less connection of top coil
- 

The dStream HeadNeckSpine is an integrated coil solution for brain, spine, total neuro, and neurovascular related imaging. It includes the HeadNeck coil, combined with the dStream Posterior coil, integrated in the table, and dStream Base. The dStream digital RF architecture allows an exceptional signal-to-noise ratio (SNR) through digitization in the coil and enhanced dS SENSE parallel imaging performance. An open visual field is provided with a mirror. On wide bore systems, the head section can be tilted to allow flexible positioning and enhance patient comfort.

# dStream **HeadNeckSpine** coil

Systems	1.5T and 3.0T systems with dStream
Coverage	45 cm (HeadNeck) 90 cm (Total neuro)
Maximum number of channels	20 (HeadNeck) 52 (Total neuro)
Main applications	Brain, (Total) spine, Total neuro, Neurovascular
Coil solution type	Integrated
Data sampling	dStream digital broadband
Coil connection	Cable-less connection of top coil
SENSE parallel imaging	dS SENSE enhanced parallel imaging performance
Other features	Mirror providing open visual field Optional FlexTilt device enhances patient comfort (wide bore systems only)



### **Sagittal 3D T1w FFE - Brain**

Resolution: 1.0 x 1.0 x 1.2 mm

Scan time: 5:29 min

Ingenia 3.0T



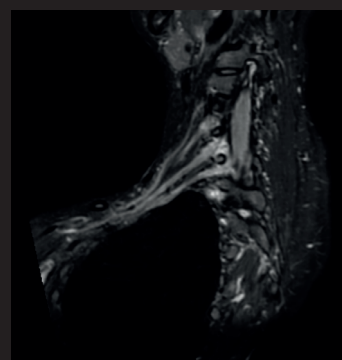
### **Coronal T2w TSE mDIXON (Water only) - HeadNeck**

Resolution: 0.8 x 1.0 x 3.0 mm

Scan time: 5:05 min

Ingenia 1.5T

Courtesy: Clinique Generale Beaulieu, Geneva, Switzerland



### **Coronal 3D STIR (oblique reformat) - HeadNeck**

Resolution: 1.2 x 1.2 x 1.2 mm

Scan time: 7:27 min

Ingenia 1.5T

Courtesy: Clinique Generale Beaulieu, Geneva, Switzerland

© 2018 Koninklijke Philips N.V. All rights reserved.  
Specifications are subject to change without notice.  
Trademarks are the property of Koninklijke Philips N.V. or their respective owners.

4522 991 34461 \* APR 2018



#### **How to reach us**

healthcare@philips.com  
[www.philips.com/healthcare](http://www.philips.com/healthcare)

#### **More information**

[www.philips.com/mrcoils](http://www.philips.com/mrcoils)