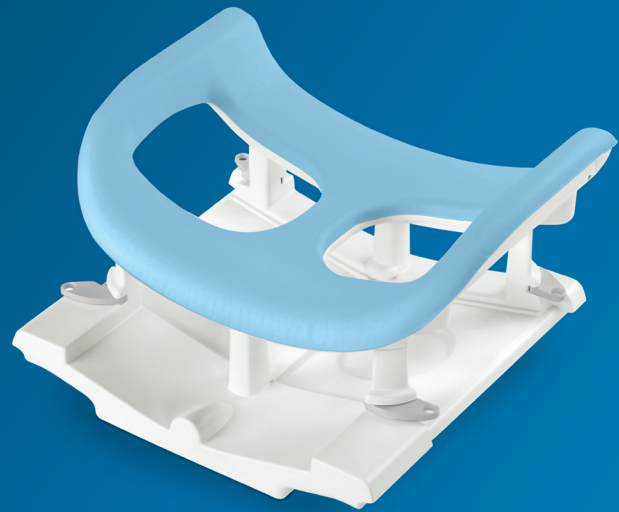


# PHILIPS

dStream Breast 7ch

MR coils



## Designed for breast diagnostic **and biopsy procedures**

### Key benefits

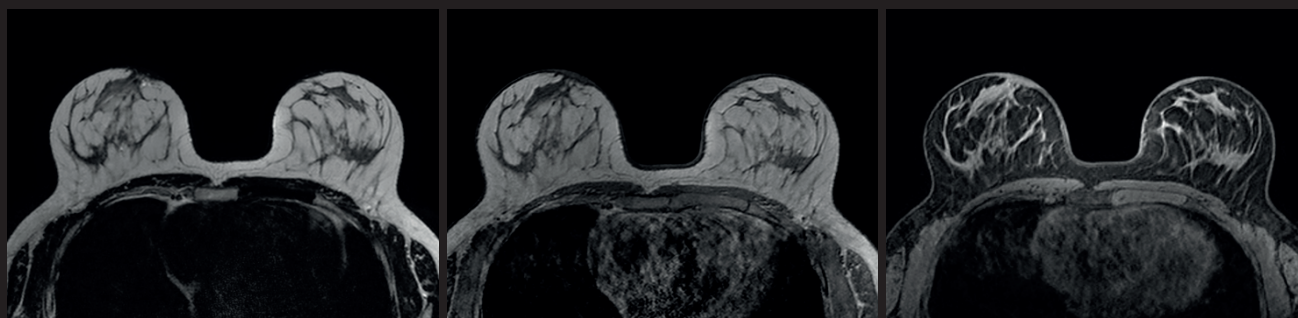
---

- Rigid, open-designed coil which can be used alone or in combination with FlexTrak Mammo
  - Excellent coverage into the axilla area
  - Promoting patient comfort with an adjustable head rest and soft patient ramp
- 

The dStream Breast 7ch coil is a rigid, open-designed coil that can be used alone or in combination with FlexTrak Mammo. The coil is designed for excellent coverage into the axilla area and provides full access to the breasts for biopsy procedures. Immobilization plates are included to reduce motion. An adjustable head rest with patient mirror and soft patient ramp are included to promote patient comfort.

# dStream **Breast 7ch coil**

Systems	1.5T and 3.0T systems with dStream
Coverage	Bilateral
Maximum number of channels	7
Main applications	Breast
Coil solution type	Dedicated
Data sampling	dStream digital broadband
Coil connection	dStream Interface
SENSE parallel imaging	dS SENSE enhanced parallel imaging performance
Other features	Two sets of bilateral immobilization plates are included to reduce patient motion either in feet-head or left-right direction Integrated LED light offering clear view during biopsy procedure



#### **Axial T2w TSE**

Resolution: 1.0 x 1.1 x 3.0 mm  
Scan time: 3:16 min  
Ingenia 1.5T

#### **Axial T1w FFE 3D**

Resolution: 1.0 x 1.0 x 1.0 mm  
Scan time: 0:57 min  
Ingenia 1.5T

#### **Axial eTHRIVE**

Resolution: 1.0 x 1.0 x 1.0 mm  
Scan time: 1:19 min  
Ingenia 1.5T

© 2018 Koninklijke Philips N.V. All rights reserved.  
Specifications are subject to change without notice.  
Trademarks are the property of Koninklijke Philips  
N.V. or their respective owners.

4522 991 34371 \* APR 2018



#### **How to reach us**

healthcare@philips.com  
[www.philips.com/healthcare](http://www.philips.com/healthcare)

#### **More information**

[www.philips.com/mrcoils](http://www.philips.com/mrcoils)