

PHILIPS

dStream Wrist 8ch

MR coils



Designed for **high resolution wrist imaging**

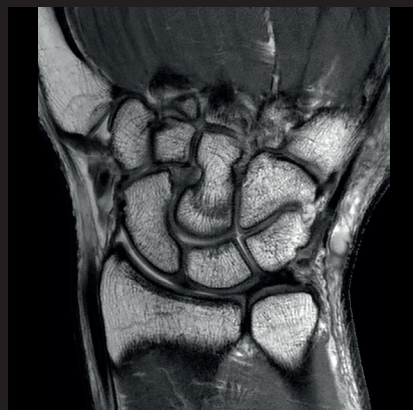
Key benefits

- Designed for high resolution visualization of interosseous ligaments
 - One-piece hinged design for easy patient setup
 - Comfortable positioning at the patient's side
-

A coil that closely fits the left or right wrist for high signal-to-noise ratio (SNR). This design provides the high SNR needed to acquire images with a small field of view (FOV). It has a one piece, ovoid, hinged design for easy patient set up. High quality imaging can be obtained with the coil at the patient's side. The coil attaches to a rigid base plate for fixation to reduce patient motion.

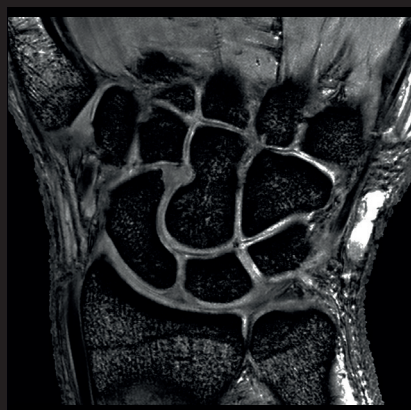
dStream **Wrist 8ch coil**

Systems	1.5T and 3.0T systems with dStream
Coverage	8 cm
Maximum number of channels	8
Main applications	Wrist
Coil solution type	Dedicated
Data sampling	dStream digital broadband
Coil connection	dStream Interface
SENSE parallel imaging	dS SENSE enhanced parallel imaging performance



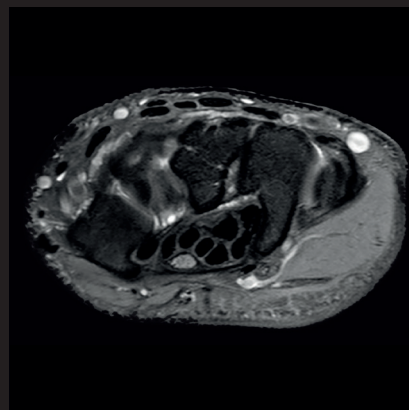
Coronal PDw TSE

Resolution: 0.2 x 0.3 x 1.9 mm
Scan time: 4:52 min
Ingenia 3.0T



Coronal 3D T1w FFE

Resolution: 0.2 x 0.2 x 1.5 mm
Scan time: 4:00 min
Ingenia 3.0T



Axial PDw SPAIR

Resolution: 0.3 x 0.3 x 2.4 mm
Scan time: 4:57 min
Ingenia 3.0T

Courtesy: Q-scan Radiology Clinics, Southport, Australia

© 2018 Koninklijke Philips N.V. All rights reserved.
Specifications are subject to change without notice.
Trademarks are the property of Koninklijke Philips
N.V. or their respective owners.

4522 991 34571 * APR 2018



How to reach us
healthcare@philips.com
www.philips.com/healthcare

More information
www.philips.com/mrcoils