

PHILIPS

dStream Pediatric
NeuroSpine 8ch

MR coils



High SNR for your **pediatric brain and spine studies**

Key benefits

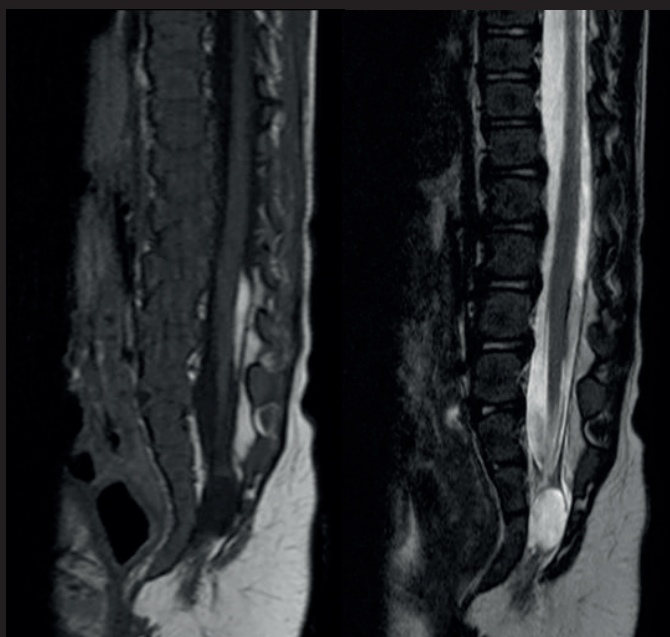
- Open-design 8-element coil which enables dS SENSE acceleration
- Dedicated pediatric ExamCards developed by the Philips MRI pediatric community
- High signal-to-noise ratio

The dStream Pediatric NeuroSpine coil is an 8-element coil for high resolution pediatric neuro and spine imaging.

The coil is optimized for neonates, but will accommodate pediatric patients weighing up to 10 kilograms. This coil is cradle shaped, and specifically designed for excellent care of the youngest pediatric patients. For enhancing efficient patient handling, the open, one piece design enables the operator to position and prepare the patient outside the examination room. Neuro examinations of brain and spine can be performed on one coil without having to move the patient.

dStream **Pediatric NeuroSpine 8ch coil**

Systems	1.5T and 3.0T systems with dStream
Maximum number of channels	8
Main applications	Pediatric brain, Pediatric spine
Coil solution type	Integrated
Data sampling	dStream digital broadband
Coil connection	dStream Interface
SENSE parallel imaging	dS SENSE enhanced parallel imaging performance
Other features	Includes: Surrounding mattress Optional: Acoustic hood



Sagittal T2w TSE (left) and T1w TSE (right)

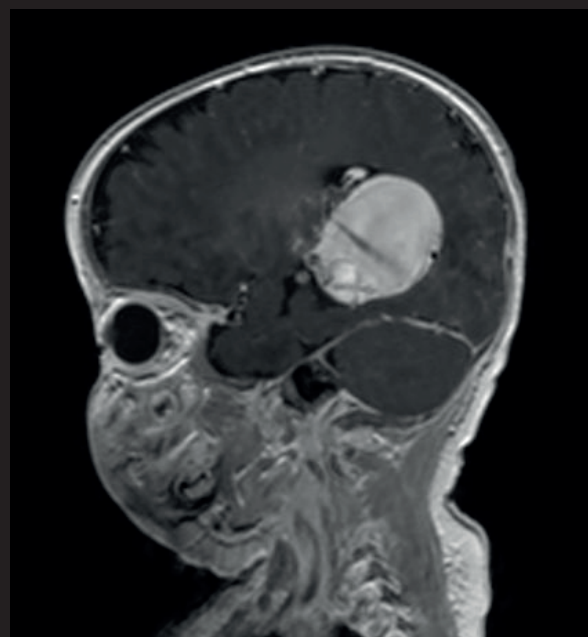
Resolution T2w TSE: 0.4 x 0.7 x 2.0 mm

Scan time: T2w TSE: 5:58 min

Resolution T1w TSE: 0.6 x 0.8 x 2.0 mm

Scan time T1w TSE: 4:22 min

Ingenia 1.5T



Sagittal T1w 3D (post-gado)

Resolution: 1.0 x 1.0 x 1.0 mm

Scan time: 4:42 min

Ingenia 1.5T

Courtesy: Cincinnati Children's Hospital, USA

© 2018 Koninklijke Philips N.V. All rights reserved.
Specifications are subject to change without notice.
Trademarks are the property of Koninklijke Philips
N.V. or their respective owners.

4522 991 34501 * APR 2018



How to reach us
healthcare@philips.com
www.philips.com/healthcare

More information
www.philips.com/mrcoils