



**PHILIPS**

VitalEye

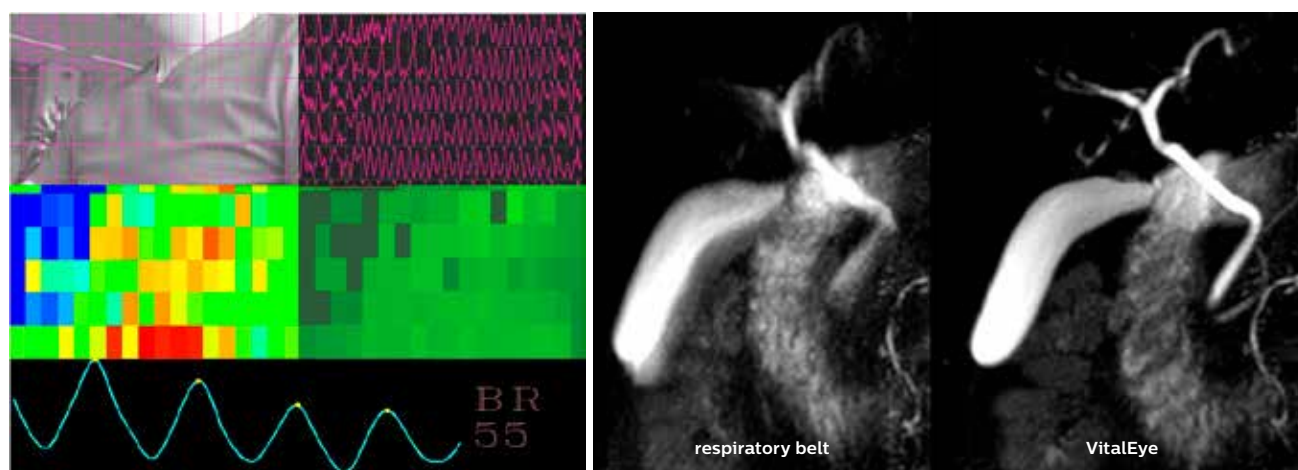
MR Systems

## **Keeps a caring eye** on your patient

With VitalEye, the technologist no longer needs to set up an old-fashioned respiratory belt, but receives a continuous and robust respiratory signal without any interaction. This revolution in patient sensing helps you keep a caring eye on your patient and provides superior image quality<sup>1</sup>, for a broad range of patient sizes, thanks to touchless patient sensing. The quality of the physiology signal is better than a belt-based approach based upon faster, more accurate, detection of breathing.

# VitalEye

System	Ingenia Elition X and Ingenia Ambition X
Coil compatibility	dS Torso, dS HeadSpine
Patient orientation	Head-first / Feet-first
Body locations	Up to 100
Frame rate	20 frames /s
Temporal resolution	50 ms
Infra red compatibility	Yes
Independent of exam room light	Yes
Motion detection resolution	Sub-mm
Accessories needed for respiratory triggering	No
Calibration	Automatic



VitalEye uses adaptive intelligence to detect even the tiniest microscopic signs of breathing. Advanced algorithms analyze up to 50 body locations parallel and in real time. This produces a respiratory trace that is more robust compared to traditional respiratory triggering methods.

1 Compared to Philips belt-based signal. Requires an unobstructed line of sight.

© 2019 Koninklijke Philips N.V. All rights reserved.  
Specifications are subject to change without notice.  
Trademarks are the property of Koninklijke Philips N.V.  
or their respective owners.

4522 991 35801 \* APR 2019



[www.philips.com/mrclinicalapplications](http://www.philips.com/mrclinicalapplications)