



PHILIPS

Ultrasound

iE33 – Diamond Select

Brighten the way ahead in cardiac imaging

The Philips iE33 Diamond Select ultrasound system provides premium cardiac capabilities at an attractive total cost of ownership through a comprehensive refurbishment process. Combining exceptional 2D and Live 3D image quality in the same transducer and a host of easy-to-use tools, the iE33 Diamond Select addresses the clinical needs of managing patients with cardiac disease for those looking to start or expand an imaging practice.

- Features proven premium cardiac imaging technology in use worldwide
- Offers piece of mind with a qualified refurbishment program at exacting standards
- Diamond Select systems come with new warranty
- Advanced features are made available at attractive prices

Premium performance, within reach

Philips is a global leader in cardiac ultrasound. You'll find that the iE33 Diamond Select has the clinical capabilities found in premium Philips ultrasound systems, with technology that was awarded a "Best in KLAS" designation. Each Diamond Select system is customized (like our new systems) to suit your needs so you get only the features that are important to you.

Advanced features

- **xMATRIX** for leading-edge ultrasound transducer technology to deliver outstanding 2D image quality on your most difficult-to-image patients and that, with the touch of a button, converts to Live 3D
- **Live xPlane Imaging** allows you to acquire two planes simultaneously from the same heartbeat, capturing critical information quickly and confidently
- **Cardiac Motion Quantification (CMQ)** to increase the precision of LV function and wall motion measurement, with a speckle tracking algorithm that makes strain analysis a useful tool in assessing presence and extent of LV disease and includes multiple strain and strain rate parameters, including longitudinal strain
- **Philips Live 3D TEE and MVQ quantification** to bring the value of 3D echo to transesophageal imaging without the complexity often associated with volume imaging
- **Workflow advantages** with one-button controls such as iSCAN, iFOCUS, and iOPTIMIZE

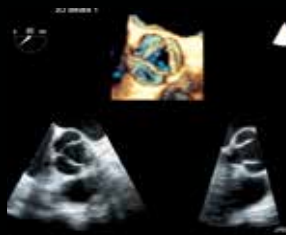


PureWave is the power to image technically difficult patients

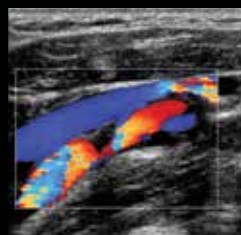
The biggest breakthrough in piezoelectric transducer material in 40 years is PureWave crystal technology. The pure, uniform crystals of PureWave are 85% more efficient than conventional piezoelectric material, resulting in exceptional performance. This technology allows for improved penetration in difficult patients with a single transducer and for excellent detailed resolution.



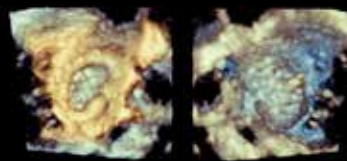
Transducers compatible with the iE33 Diamond Select are also interoperable with other Philips ultrasound systems such as the iU22, HD11XE, HD15, and (with a compact adapter) the CX50.



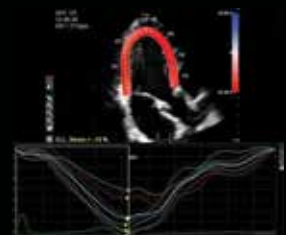
Aortic valve diastole



Internal carotid artery stenosis



Dual volume display provides two Live 3D TEE images from the same volume



CMQ-derived strain imaging with the X5-1

Confidence comes from within

iE33 Diamond Select is a Philips system through and through, refurbished to our exacting standards. Every Diamond Select system is also supported by the financing options and services of Philips.



Step 1 – Stringent selection

Philips identifies and selects prime systems by evaluating the equipment's age, condition, and service history.



Step 2 – Skilled de-installation and transport

Proper de-installation and specialized transport by experienced technicians so that the system arrives in one of the Philips facilities in good condition.



Step 3 – Expert refurbishing

The system is fully inspected by highly qualified engineers, components are registered and inventoried, and the refurbishment process begins:

- System cleaned and disinfected
- System is fully disassembled
- All components thoroughly tested
- Obsolete, defective, or worn parts replaced
- Latest software releases and field updates installed
- System fully configured to meet customer specifications
- System exterior updated to appear identical to a new system
- Full performance and image quality checks performed according to original specifications



Step 4 – Effective installation

The system is installed, calibrated, and tested by experienced technicians to the same high standards as any new piece of equipment.



Step 5 – Full warranty and support

As with all new systems, Diamond Select refurbished systems come with Philips warranty, applications training, attractive financing options, and the support of Philips worldwide customer service.



Genuine Philips quality, inside and out

While “refurbishment” means different things to different manufacturers, here’s the Philips definition: a full and meticulous renewal process that includes the latest software releases and field updates, with full performance and image quality checks against original specifications.

Circular economy for a sustainable planet

Philips strives to improve people's lives and make the world healthier and more sustainable through innovation. The Diamond Select program is an excellent example,

offering completely refurbished systems that allow for quality care for a larger population.

Each Diamond Select system contains between **30%-100%** recycled or refurbished components by weight and **reduces the emission of CO₂** during manufacturing.



Count on us as your patients count on you

The value of a Philips ultrasound system extends far beyond technology. With every Diamond Select system, you get access to our award-winning service organization,* competitive financing, and educational tools that help you get the most out of your system.**

Understanding your needs, designed **for you**

Our flexible RightFit Service Agreements, education offerings, and innovative financing solutions can be adapted to meet your needs and strategic priorities.

* Philips is rated number one in overall service performance for ultrasound for 23 consecutive years in the annual IMV ServiceTrak survey in the USA.
** Optional. Not all services available in all geographies; contact your Philips representative for more information. May require service contract.

