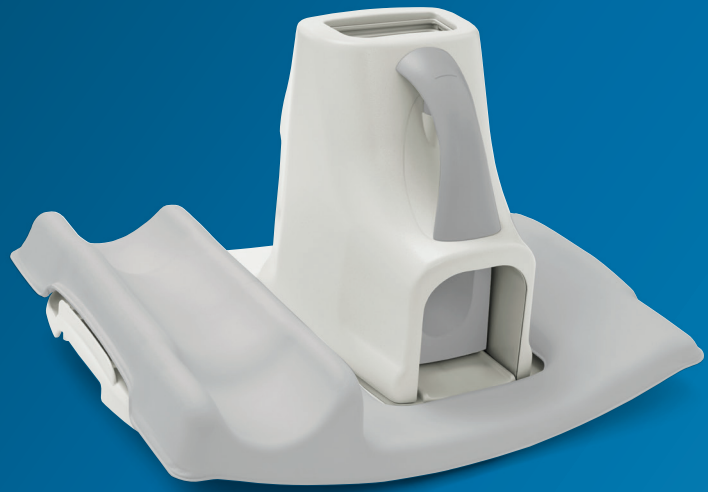


PHILIPS

dStream
FootAnkle 8ch

MR coils



Designed for **large coverage imaging**

Key benefits

- Designed for high resolution visualization of detailed cartilage structures
- Easy patient set up, even for tall patients
- Foot can be positioned in a comfortable 15 degree angle

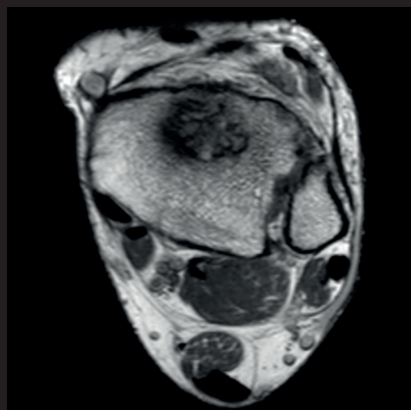
A ski-boot-shaped coil designed for optimum coverage and high resolution visualization of the ankle and entire foot down to the toes. The coil design and element layout allow for either large field of view (FOV) imaging of the whole foot or small FOV high resolution imaging of ankle joints. The coil is easy to set up and can be used with the patient's foot positioned vertically or up to 15 degrees plantar flexed towards the sole.

dStream **FootAnkle 8ch coil**

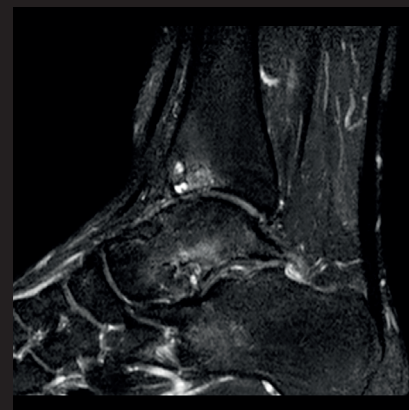
Systems	1.5T and 3.0T systems with dStream
Coverage	30 cm
Maximum number of channels	8
Main applications	Foot, Ankle, Toes
Coil solution type	Integrated
Data sampling	dStream digital broadband
Coil connection	dStream Interface
SENSE parallel imaging	dS SENSE enhanced parallel imaging performance



Coronal T1w TSE
Resolution: 0.4 x 0.7 x 3.0 mm
Scan time: 1:10 min
Ingenia 1.5T



Axial PDw TSE
Resolution: 0.5 x 0.7 x 3.5 mm
Scan time: 0:53 min
Ingenia 1.5T



Sagittal PDw SPAIR
Resolution: 0.6 x 0.8 x 3.0 mm
Scan time: 1:55 min
Ingenia 1.5T

Courtesy: Utrecht Medical Center, The Netherlands

