



PHILIPS

Prodiva 1.5T CS

dS TorsoCardiac

MR Coil

Enhance your throughput

Faster body exams with Breeze Workflow

The dS (dStream) TorsoCardiac Coil 1.5T is an integral part of the Breeze Workflow when used in combination with the dS NeuroVascularSpine (NVS) 1.5T coil. This thin, flat, lightweight anterior coil easily fits around each patient's body shape for fast, efficient, and comfortable scanning. Thanks to short cables, mini connectors and compact electronics, the anterior coil is ultralight. Breeze connect reduces the number of positioning steps and enables you to accelerate your daily exam workflow.

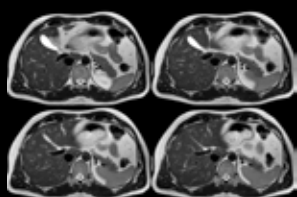
dS TorsoCardiac

Coverage	42 cm (landscape mode) 55 cm (portrait mode)
Maximum number of elements	Up to 20 elements (8 anterior + 12 posterior elements)
Main applications	Thorax, abdomen, pelvis, lower peripherals and cardiac (combined with optional posterior NVS Spine coil). Body oncology
Data sampling	dStream digital broadband
Coil connection	dS Interface
dS SENSE parallel imaging	Up to 16
Weight	~1.30 kg

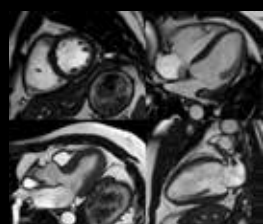


Together with the dS NVS coil, the dS TorsoCardiac coil delivers:

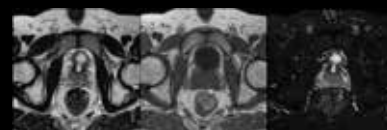
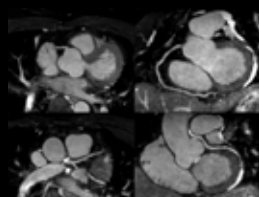
- Fast patient set up with Breeze Workflow thanks to ease of coil handling
- Easy exams with SmartSelect. It automatically detects and selects the right coil and coil elements to create the highest SNR for the selected area.
 - Simplifies patient positioning and coil placement
 - No need for manual coil or element selection
- Fast imaging with proven dS SENSE parallel imaging offering up to 16 times faster imaging in core applications



Anatomy: Abodomen
Sequence: Multivane XD
Scan Time: 2.48m
Thickness: 3mm



Anatomy: Cardiac
Sequence: Cine bTFE



Anatomy: Prostate
Sequence: T2/T1/SPAIR
Scan Time: 3.17m/1.56m/3.21m
Thickness: 3mm

This material is not for distribution in the USA.

© 2017 Koninklijke Philips N.V. All rights reserved.
Specifications are subject to change without notice.
Trademarks are the property of Koninklijke Philips N.V. or their respective owners.

4522 991 30071 * SEP 2017



How to reach us
www.philips.com/healthcare
healthcare@philips.com

Product information
www.philips.com/mrcoils