



PHILIPS

dS Small Extremity 16ch

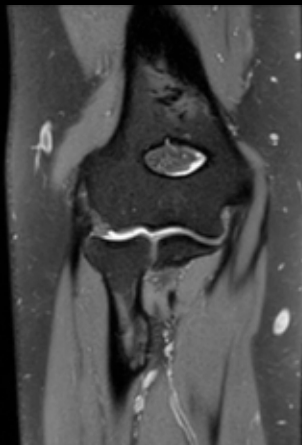
MR Coil

Flexibility for **high resolution**

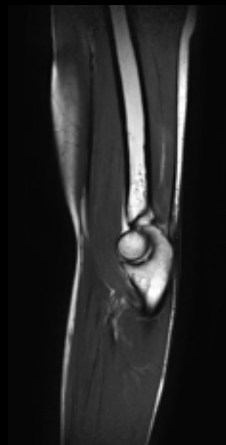
dS Small Extremity coil is designed to accommodate various patient sizes. The coil has an inner diameter of 20 cm to match the size of small extremities such as elbows, wrists, hands, small knees and shoulders. The coil has a close fit to the anatomy enabling high resolution imaging of cartilage and bone. Flexible wrap-around design provides easy positioning and good fit. A dedicated mattress that supports both patient and coil is included to promote patient comfort and reduce motion.

dS Small Extremity 16ch

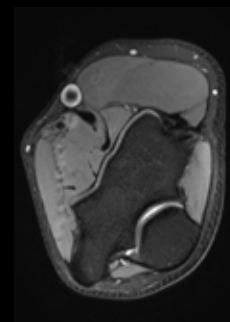
System configuration	1.5T and 3.0T systems with dStream.
Main applications	Elbow, wrist, hand, small knee and shoulder.
Coverage	24 cm in FH direction.
Maximum nr. of channels	16.
Coil type	Dedicated.
Data sampling	dStream digital broadband.
Parallel imaging	dS SENSE enhanced parallel imaging performance.



Coronal 3D VIEW - PDw SPAIR
0.7 x 0.7 x 0.7 mm, 5:52 min
Ingenia 1.5T



Sagittal T2w TSE
0.4 x 0.4 x 3.0 mm, 2:42 min
Ingenia 3.0T



Axial PDw SPAIR
0.5 x 0.5 x 3.0 mm, 4:05 min
Ingenia 3.0T