



**PHILIPS**

Prodiva 1.5T

dS NeuroVascularSpine

MR Coil

dS NVS Head 1.5T

## Enhance your throughput

Faster neuro, vascular and spine exams  
with Breeze Workflow

The dS (dStream) NeuroVascularSpine coil (NVS) is an integrated coil solution for brain, spine, total neuro and neurovascular-related imaging. It includes the NeuroVascular coil, combined with the Posterior coil. In combination with the optional anterior coils this coil solution extends imaging of the body, MSK and extremities. The dStream digital RF architecture enables an exceptional signal-to-noise ratio (SNR) through digitization in the coil and enhanced dS SENSE parallel imaging performance.

# dS NeuroVascularSpine

Coverage	24 cm (head/brain) 50 cm (head/neck) 80 cm (total neuro)
Maximum number of elements	Posterior: 18 elements Head/brain: 8 elements Head/neck: 12 elements Neurovascular: up to 23 elements (combined with optional anterior coils)
Main applications	Head and brain Spine: cervical, thoracic, lumbar and total spine Total neuro Neurovascular PV Angio (feet first) Pediatric
In combination with anterior coils:	Torso MSK Extremities
Coil solution type	Integrated
Data sampling	dStream digital broadband
Coil connection	Cable-less connection of dS NVS Head top
dS SENSE parallel imaging	Up to 16
Weight	Head top: ~2.69 kg
Patient comfort features	Mirror providing open visual field Head base is fitted with natural tilt feature where it connects to Posterior coil to enhance patient comfort

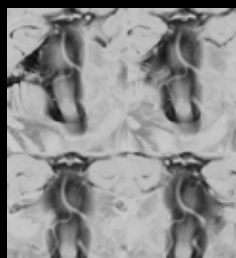


Simplify exams with SmartSelect. It automatically detects and selects the right coil and coil elements to create the highest SNR for the selected area.

- Simplifies patient positioning and coil placement
- No need for manual coil or element selection



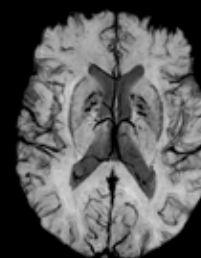
Anatomy: Brain  
Sequence: T2



Anatomy: Neuro  
Sequence: Basilar artery morphology



Anatomy: Spine  
Sequence: T2  
Scan Time: 3.19m  
Thickness: 4mm



Anatomy: Brain  
Sequence: SWI  
Thickness: 2mm

