



# Enterprise-wide image delivery

## Philips IntelliSpace PACS Enterprise 4.4 web-based distribution solution

Philips IntelliSpace PACS 4.4 provides access to relevant, multi-modality information to support clinical decision making anywhere,<sup>1</sup> anytime. It simplifies PACS via a unique service delivery model with built-in flexibility, scalability and interoperability. Ultimately, it facilitates collaboration throughout the enterprise to enhance clinician workflow, patient care, and financial outcomes.

Philips IntelliSpace PACS Enterprise is an enterprise-wide image distribution solution that brings the power of radiology to the point of care. Rapid delivery of imaging data and interpretations to referring physicians

allows for expedited treatment decisions. With Philips IntelliSpace PACS Enterprise, clinicians have rapid access to diagnostic-quality images anywhere,<sup>1</sup> anytime.

### Key advantages

Real-time, enterprise-wide delivery of diagnostic-quality images

Customizable, intuitive interface

Advanced visualization capabilities<sup>2</sup>

Open platform

### Capabilities

Supports multiple locations and offsite users, including a remote reading configuration toolset that optimizes low-bandwidth environments for exceptional image delivery

Designed for clinicians by clinicians to improve access and enhance communications

Allows volumetric image visualization and manipulation to navigate and review complex datasets

For interface with enterprise systems (such as EMRs), third-party applications, and custom solutions

**PHILIPS**  
sense and simplicity

# By clinicians, for clinicians

Enhancing efficiency in image distribution and communication among caregivers can lead to improved productivity and allow more time for direct patient care. Philips IntelliSpace PACS Enterprise was designed by clinicians, for clinicians, to provide quick access to features, functions, images, and relevant patient information. This intuitive design means that Philips IntelliSpace PACS Enterprise is easy to use and easy to learn, which can reduce training time. Tools can be directly accessed without navigating through complex menus. Customizable functions and keyboard shortcuts further enhance usability.



Some PACS solutions are not equipped to share data beyond the radiology department. Physicians diagnosing complex cases need real-time access to diagnostic-quality images and advanced clinical tools to review exams from multiple scans and sources. Advanced imaging technologies and large, complex data sets demand an application infrastructure that can facilitate diagnosis and sharing of results.

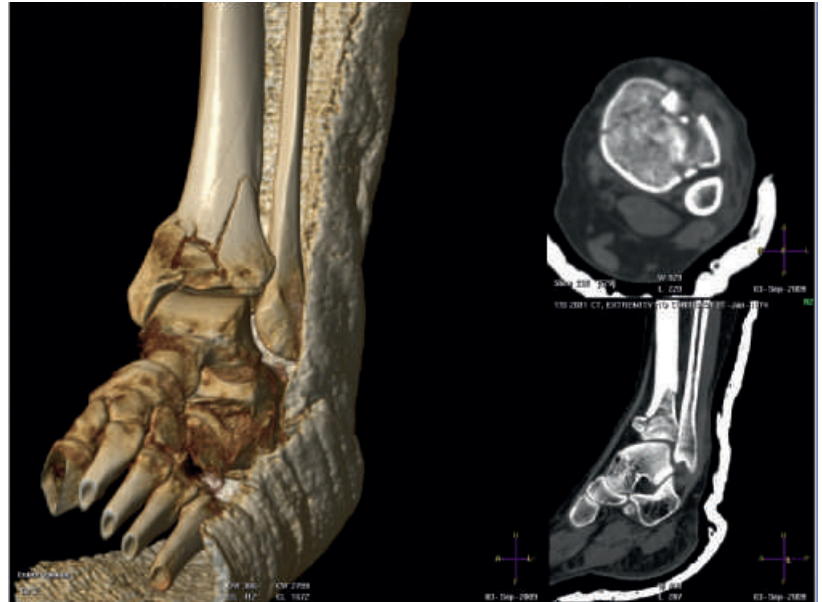
Philips IntelliSpace PACS Enterprise is web-based, so clinicians have access to images, patient records, and radiology reports wherever the hospital network reaches. With its innovative iSyntax<sup>3</sup> technology, IntelliSpace PACS Enterprise rapidly delivers diagnostic-quality images from radiology and cardiology.

## The IntelliSpace PACS Enterprise difference

Features	Benefits
<b>Customizable tools</b>	
Keyboard and mouse shortcuts	Allow users to work more efficiently by configuring interactive tools based on personal preferences
“Drag and drop” files into folders	Organize patient studies into folders for quick access and review
<b>Workflow features</b>	
Private/public folders, clinicians’ worklists	Support clinicians and enterprise workflow and facilitate communication among radiologists, technologists, and referring physicians
Auditing, reporting, and statistics	Track real-time user and patient record activity, which aids in compliance with privacy laws
<b>Intuitive user interface</b>	
Real-time overview of patient’s clinical history timeline and links to relevant studies	Provides quick access to patient’s radiological history, including diagnostics reports, exam notes, clinical history, and images
Optimized use of screen space to display images	Promotes rapid user adoption while reducing training required

# Speed review and consultation

Philips IntelliSpace PACS Enterprise offers advanced visualization<sup>2</sup> features to speed the review and consultation of volumetric datasets such as multi-slice CT and MR cases. On-demand task guidance provides step-by-step assistance for more complex tasks.



Fully interactive volume rendering with linked MPR references for quick and thorough inspection, or for patient consultation of a fractured ankle.

## Advanced visualization and communication tools

Features	Benefits
<b>Multi Planar Reformatting (MPR), Maximum Intensity Projection (MIP)</b>	
<ul style="list-style-type: none"> <li>• One-click interactive orthogonal, oblique, and double oblique viewing</li> <li>• Curvilinear MPR and MIP with task guidance</li> <li>• Interactive slab thickness adjustment and navigation</li> </ul>	Provides excellent visualization of anatomy in any cut plane direction and in curved planes for immediate insight into morphology
Screen captures stored to the exam	Facilitates viewing and manipulation of large, complex datasets
<b>3D Volume Rendering (VR)</b>	
Predefined multi-modality 3D thumbnail classification presets gallery with interactive opacity threshold adjustment	Easy to optimize visualization of various anatomical structures
High-resolution shaded volume rendering technique	Allows clinicians to quickly verify finding found via volumetric viewing with original 2D source images
<b>Workflow and communication features</b>	
Collaborative workflow support tooling, bookmarking, and movie generation	Helps improve efficiency and service to referring physicians
Stores captures to the exam – captures are bookmarked	Convenient communication is enhanced – saves a capture into an interactive visualization for tuning of the remotes

# Advanced clinical and workflow tools

IntelliSpace PACS Enterprise leverages a rich portfolio of clinical applications for various modalities, including Volume Vision R8.2. In addition, IntelliSpace PACS Workflow Layer 2.0 is an advanced workflow solution designed to enhance productivity and interdepartmental collaboration.

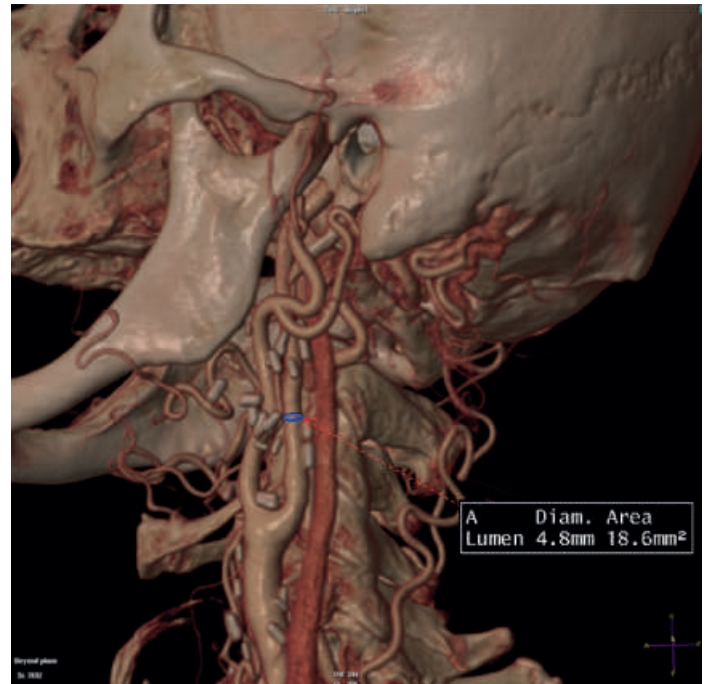
## Clinical applications

Cardiology, neurology, oncology, musculoskeletal, gastroenterology, and digestive diseases are among clinical applications supported. Distributed from the server repository, the clinical applications are available on a single IntelliSpace PACS 4.4 workstation, reducing the need for multiple multi-vendor workstations. They can be installed selectively on the clients, supporting workflow needs and site-specific configuration requirements.

Please consult your Philips sales representative for a full portfolio review, or log on to [www.philips.com/IntelliSpace/ClinAppsPACS](http://www.philips.com/IntelliSpace/ClinAppsPACS) to view and download related information.

## IntelliSpace PACS Workflow Layer 2.0

To streamline radiology workflow, the Communication Management functionality in IntelliSpace PACS Workflow Layer (chat, mail, and broadcast messaging) provides contextually integrated communication between IntelliSpace PACS users. Additional functionalities include ED-RAD Discrepancy Management, designed to facilitate communication and workflow between radiology and emergency department physicians, and Critical Findings Management, allowing timely communication of findings to physicians.



**IntelliSpace CT/MR Vessel Explorer R8.2** provides quantification of vessels in CTA and MRA studies instantly, with the click of a mouse.

<sup>1</sup> It is the user's responsibility to ensure that Philips network performance recommendations for IntelliSpace PACS 4.4 are met.

<sup>2</sup> IntelliSpace Volume Vision is the 2D/3D/4D enhanced viewing application part of the IntelliSpace Clinical Applications R8.2, bundled with the comprehensive IntelliSpace PACS solution. IntelliSpace Volume Vision R8.2 is shipped only in combination with IntelliSpace PACS 4.4 and is not available for the iSite PACS 3.6 or 4.1 installed base.

<sup>3</sup> Based on mathematical representations of images called wavelets, iSyntax allows just-in-time delivery of image data for rapid access. Diagnostic-quality images are delivered over limited-bandwidth networks.

Please visit [www.philips.com/IntelliSpacePACS](http://www.philips.com/IntelliSpacePACS)



© 2011 Koninklijke Philips Electronics N.V.  
All rights are reserved.

Philips Healthcare reserves the right to make changes in specifications and/or to discontinue any product at any time without notice or obligation and will not be liable for any consequences resulting from the use of this publication.

Philips Healthcare is part of Royal Philips Electronics

[www.philips.com/healthcare](http://www.philips.com/healthcare)  
[healthcare@philips.com](mailto:healthcare@philips.com)

Printed in The Netherlands  
4522 962 74901 \*AUG 2011