



PHILIPS

Interventional X-ray

Allura Centron

Making the difference
with Live Image Guidance

Making the difference with Live Image Guidance

Philips Allura Centron

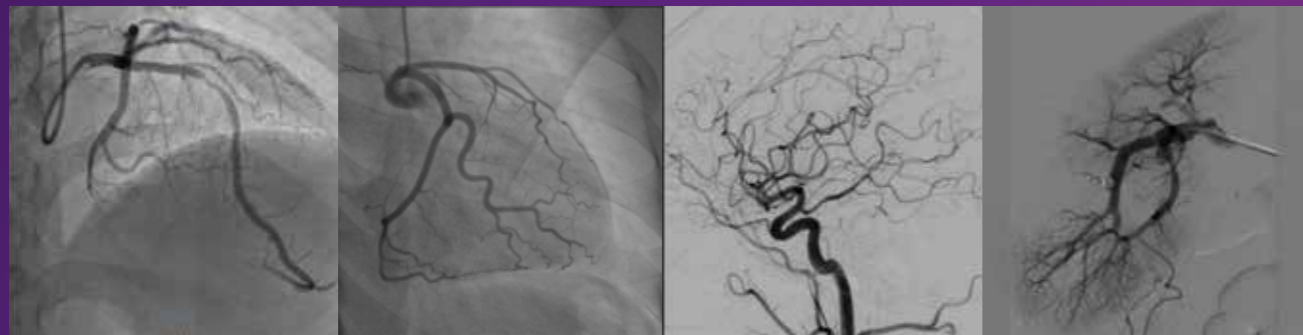
Together we make the difference in minimally invasive treatment to improve patient outcomes and save lives. With our Live Image Guidance we aim to remove barriers to safer, effective and reproducible treatments, delivering relevant clinical value where it's needed most – at the point of patient treatment.

Intelligent and intuitive integration of live imaging, patient information, and procedure based applications optimize real time therapy guidance.

Our Allura Centron is a robust interventional X-ray lab designed to handle a variety of procedures at an excellent pace.

Designed for Cardiac and Electrophysiology procedures, Allura Centron also offers the flexibility for use in Neuro and Vascular procedures. Its unique combination of excellent image quality, ease of use and the robust Allura series performance make Allura Centron a superb solution. Perfect for today's hospital to manage high procedure load with variety of procedures.

Together, we open doors to new procedures and techniques that truly make a difference to people's lives while driving growth and reducing the cost of care.



Courtesy of Clinique Pasteur, Toulouse, France and Ruby Hall Clinic, India

Contents

Greater insight and confidence in finding and treating the problem 4

Allura Centron is a versatile system designed for Cardiac and Electrophysiology procedures, ready for the demands of Neuro and Vascular interventional procedures.

Better user experience to promote consistency and efficiency 6

Allura Centron is designed for ease of use with proven user interfaces from Allura Xper systems.

Lower barriers for minimally invasive interventions 8

Our DoseWise philosophy shows our commitment to reducing dose.

Greater insight and confidence in finding and treating the problem 10

We have a long-term vision for interventional imaging and provide full support throughout the whole lifecycle.

Greater insight and confidence in finding and treating the problem

With the increasing number of elderly patients, and rising levels of obesity and diabetes, hospitals are facing the increasing burden of cardiovascular diseases. Moreover, the rising demand for healthcare, and the cost pressures that all hospitals are facing, are taking their toll on limited hospital resources.

Coronary catheterization techniques have become the norm. But although they account for a significant proportion of the procedures that your hospital carries out, investing in a system that is only capable of handling cardiac procedures doesn't make financial sense. You need a solution that does exactly what it should and focuses on its tasks.

That's why we've developed Allura Centron, a multi-purpose system. It offers the ease of use and workflow speed required for daily practical use. As one of our most flexible and efficient interventional X-ray systems, Allura Centron delivers clinical value where it's needed most - at the point of patient treatment. Advanced live image guidance, helps you benefit from high definition, clear visualization of even the small vessels. While it offers intelligent and intuitive integration of patient information, disease-specific tools enable a wide range of procedures.

Proven performance

Allura Centron is part of the Allura series of interventional X-ray labs. Designed for highly reliable, robust performance, from the Philips MRC tube to the 100kW Velara generator and flexible geometry, it enables you to treat patients with more confidence.

Cover the anatomical areas you need

Thanks to the next generation 15" detector you can benefit from excellent image quality. With this 15" detector you have access to a wider anatomical coverage to give you the opportunity to perform a variety of procedures. Allura Centron uses the superb Philips image processing chain to enable you to see small vessel details with exceptional clarity. You can also select your field of view, giving you the insight you need to diagnose and treat patients with precision and confidence. What's more, with reduction in number of extra runs, you may also save on dose and enhance procedure times.

StentBoost – enhance accuracy with instant stent visualization

StentBoost with its unique StentBoost Subtract feature allows you to clearly see your stent in relation to the vessel wall. So you can immediately check positioning, before and after deploying balloons and stents, and confirm stent expansion.

StentBoost is an excellent alternative to intravascular ultrasound (IVUS) when it is not available or when a quick result is required.

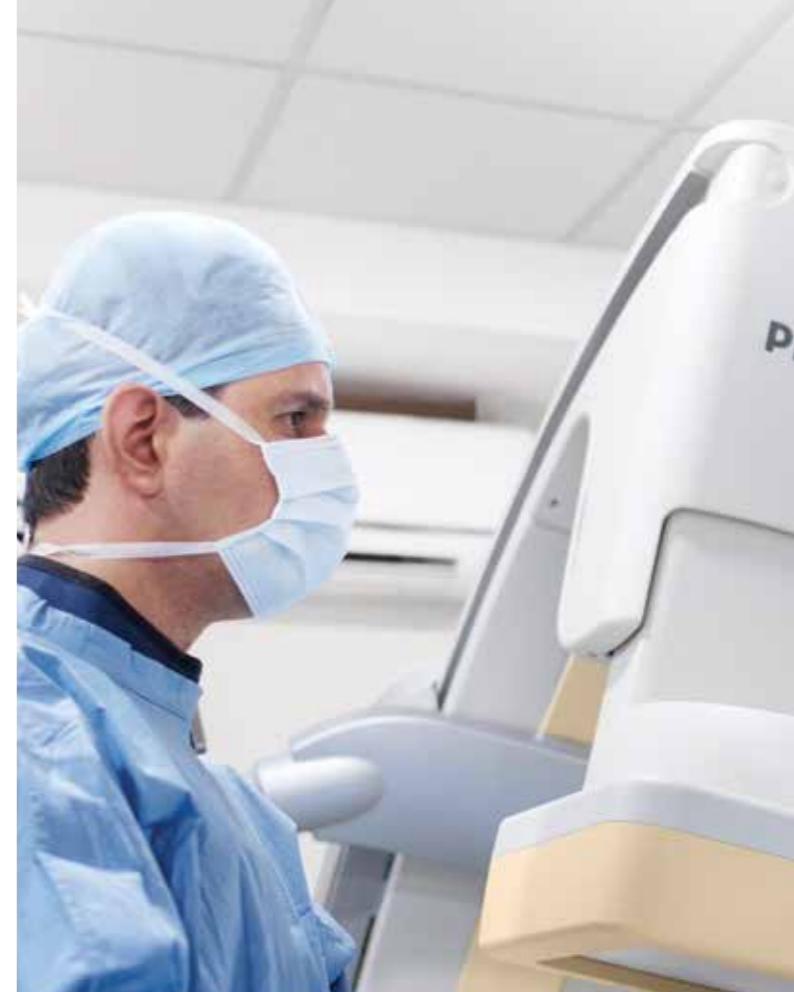
3D-RA

Philips Allura 3D-RA provides extensive 3D visualization of vascular pathologies from a single rotational angiography run. Used with the whole-body coverage of Philips Allura FD systems, it can cover virtually any anatomy including cerebral, abdominal and peripheral vasculature. Moreover, its high-resolution 3D reconstructions are available in near real-time, while a full suite of analysis and visualization supports interventional decisions

- 3D imaging in the interventional lab
- Volumetric view of any vascular anatomy for 3D guidance during treatment
- Assists with treatment planning

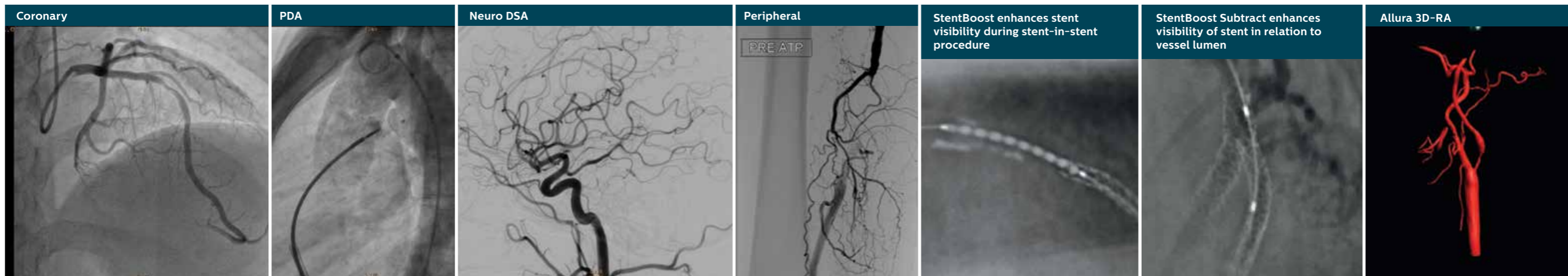
XperSwing

During a dual axis rotation scan, the C-arm operates on two axes simultaneously, enabling it to swing in a three-dimensional arc around the patient, providing a flexibility of movement that allows it to capture the required coronary images in fewer 'runs'. The system rotates with curved trajectories around the patient, thereby allowing imaging in all desired anatomical views in a single run. The trajectories are pre-programmed and are optimized to maximize the clinical image content, while staying within its boundaries in order to avoid any collisions. Dedicated trajectories are available for the left and the right coronary arteries.



Key benefits

- Highly versatile system focused on Cardiac and EP procedures with flexibility to handle Neuro and Vascular interventional procedures
- Part of the industry-leading Allura series with highly reliable robust performance and proven ease of use
- Excellent IQ with 15" next generation flat panel detector and Philips gold standard image processing technology
- High performance backed by legendary MRC tube and Philips generator installed in over thousand+ sites worldwide





Better user experience

to promote consistency and efficiency

Flexible table design

The high capacity table can easily accommodate higher patient loads. It features 'feather-light', free floating table top dedicated to cardiovascular procedures. Discover easy patient transfer with lower height.

Intuitive Interface and flexible positioning

Allura Centron is designed for ease and efficiency, based on the Philips' Allura Xper graphical interface and tableside, touch screen controls. It also shares the same Imaging modules that make it so intuitive to use. The remote view pad allows you to browse, manipulate and navigate images, while the 3-peddle footswitch provides tactile feedback to control the procedure room lights. Thanks to the Philips Monitor Ceiling Suspension (MCS), monitors are easy to integrate into the procedure room. The MCS also allows flexible and freely rotating positioning with a concave set-up of the monitors for optimum viewing angle.

Head-to-toe coverage

The unique design of the longer table offers head-to-toe imaging during interventional procedures. This, coupled with Allura Centron's three side positioning provides flexibility and allows patient access from all sides.

Geometry and controls

Allura Centron also has a highly stable geometry. Floor mounted and ergonomic, it offers the versatility of motorized, 3-side positioning with the option to pivot the table for radial approaches. The C-arm can be moved quickly and is capable of achieving steep cranial projections while cardiac procedures are performed at the side. It also allows excellent accessibility for anaesthesia, helping manage patient protection and ensuring you can work unhindered throughout the procedure.

DICOM Image Interface

The DICOM Image Interface enables clinical images to be exported to ViewForum, Xcelera or any third party PACS. Images are transferred via a fast Ethernet link so they're available on line in seconds. The system also includes automatic background archiving with the Continuous Autopush option, enabling you to continue with virtually any procedure unhindered.

DICOM Structured Dose Report

DICOM interoperability means you also have an option to collect dose-relevant parameters and settings, and export them to a DICOM database (e.g. PACS, RIS). Optional software can enable reported data to be used for analysis to manage X-ray dose.

Key benefits

- Highly stabilized geometry with versatile motorized, 3-side positioning
- High capacity pivot table with 'feather-light' free floating table top
- Option of Longer Table can offer head-to-toe imaging during interventional procedures
- Designed for ease of use with proven user interfaces from Allura Xper systems
- DICOM Image Interface and Structured Dose Report for fast export and easy archiving of images





Lower barriers

for minimally invasive interventions

Our long standing commitment to reducing dose is founded in our DoseWise philosophy. DoseWise is a set of techniques, programs, and practices that supports excellent image quality, while protecting people in X-ray environments. It's a philosophy that drives Philips to develop innovative new strategies in dose management.

most demanding procedures, thanks to the powerful MRC X-ray tube. Pulsed fluoroscopy enables very low pulse frequencies, further reducing the X-ray dose. Three application specific fluoroscopy settings are also available at any time during procedures. Many steps can be done without radiation thanks to virtual collimation of shutters and wedges and storing of fluoroscopic runs.

Unique protection system

Patient and operator protection are designed into the system. Philips' exclusive BodyGuard non-contact patient protection mechanism uses capacitive sensing. This determines the location of the patient, in relation to the C-arm, thereby preventing collision. The device adjusts automatically to the size of patient, avoiding contact and providing a degree of protection, comfort and speed that you simply won't find in comparable X-ray systems.

DoseAware* (optional)

This innovative solution helps you manage your exposure to scatter radiation. DoseAware provides instant, time-stamped feedback in the examination room so you can immediately adjust your working habits to minimize exposure. A personal dose meter, helps you track when and where dose was acquired, so you can take appropriate action during a procedure. A coloured display in the examination room also helps you easily check your exposure level with one glance. DoseAware also includes an option so you can print or e-mail a full radiation dose report at the touch of a button.

SpectraBeam

SpectraBeam technology generates images using low radiation dose by filtering out soft radiation. Uninterrupted operation is possible, even during your



“DoseAware is one of the most important tools available to help manage occupational medical radiation exposure to physicians and staff. It’s a much easier and practical way to monitor levels than conventional methods. Creating a better work environment is not only the right thing to do but our obligation.”

J. Kiah, MS, RN Lab Manager, Director Cardiac and Vascular Services
Baptist Cardiac & Vascular Institute, Miami, USA



Key benefits

- DoseWise for radiation dose reduction
- Unique Bodyguard technology which adapts to the patient size and protects the patients from collision
- Generate images while using low radiation dose by use of SpectraBeam technology
- Instantly manage your scatter radiation exposure with DoseAware

* DoseAware does not replace the thermo-luminescent dosimeter (TLD) as a legal dosimeter.

Increased economic value

When your healthcare facility purchases a new system you are making a long-term commitment to your patients and personnel. We have a long-term vision for interventional imaging and provide full support throughout the whole lifecycle. We are dedicated to helping you keep the quality of your care as high as possible, and your costs and risks as low as possible. That's our commitment to you.

We provide comprehensive service agreements to ensure the low cost-of-ownership while remaining the high up-time. Backed by Philips Healthcare Services, our enormous global network of professionals which supports your patients and the people who care for them. We help keep your systems performing at their peak, motivate and educate your staff, and help drive organizational efficiency to support improved economic value. Our service solutions are designed to help you increase your efficiency and deliver quality patient-focused care.



Key benefits

- Full support throughout the whole lifecycle of your interventional system, increasing uptime
- A comprehensive range of flexible service contracts aligned with your budget and in-house capabilities

Extend your clinical capabilities further

You can extend the capabilities of your Allura Centron with a set of clinical tools that provide you with everything that you need to focus on the patient and the procedure at hand. These include:

- **Quantitative Vascular Analysis (QVA)**
Automatic analysis to determine the vessel diameter and stenotic index.
- **Quantitative Coronary Analysis (QCA)**
Automatic analysis for stenosis quantification including diameter of selected segment and calibration routines.
- **Left Ventricular (LVA)**
Quantifies left ventricular status using various data and includes left ventricular volumes, ejection fraction, cardiac output, wall motion and calibration routines.
- **Right Ventricular (RVA)**
Specifically intended for paediatric cardio applications. Focuses on easy and efficient wall contour detection and includes calibration routine.
- **Digital Subtraction Angiography (DSA)**
Extends Allura Centron's vascular application functionality. Features real-time digital subtraction at low frame speeds giving exceptional IQ for subtracted images.
- **Roadmap Pro**
A roadmap for advanced subtraction angiography techniques, created by superimposing a live fluoro image on an angiographic image. Plus insights into positioning tools and materials, evaluating their effect and providing guidance on how to proceed during a case. Available with DSA options.
- **Xper Flex Cardio**
A small, compact and reliable hemodynamic measurement system that saves floor space and moves with the table. Includes integrated Fractional Flow Reserve (FFR) measurements and proven Philips ECG capabilities.

“When Allura Centron came on the market, we studied the beautiful specifications that it offered and it was an obvious choice for us. The speed of movement of the C-arm is excellent which makes things happen very quickly. The cooling is a big advantage on this system. We end up doing 10 cases in 6 hours’ time, and the lab is always ready.”

Dr. Shirish Hiremath, Director, Cardiology, Ruby Hall Clinic, India



“Installing the Allura Centron has really boosted the clinical offering and levels of care we can provide patients. It has increased the number of routine procedures we can perform daily, and freed up our existing Allura systems for more complex interventions. As it shares a common user interface and geometry with other Allura models, our operators have found it very easy to incorporate the Centron into their existing workflows.”

Dr. Daniel Colombier, Clinique Pasteur, Toulouse, France





This document is not intended for use in the United States and Canada.

© 2015 Koninklijke Philips N.V. All rights reserved. Specifications are subject to change without notice. Trademarks are the property of Koninklijke Philips N.V. (Royal Philips) or their respective owners.

www.philips.com/alluracentron

4522 991 08181 * JAN 2015