

Installation Guide

Variable Height Channel (VHC)

Variable Height Channels are available in the following weight-handling ranges. Weight range indicates the optimal operating range for the devices mounted in the channel.

VHC Part Number	Weight Range
FWM-0001-12	13 – 18 lbs. [5.9 – 8.2 kg]
FWM-0001-13	18 – 23 lbs. [8.2 – 10.4 kg]
FWM-0001-14	23 – 28 lbs. [10.4 – 12.7 kg]
FWM-0001-15	28 – 32 lbs. [12.7 – 14.5 kg]
FWM-0001-16	32 – 36 lbs. [14.5 – 16.3 kg]

Installation Notes – Read Before Installing the Variable Height Channel:

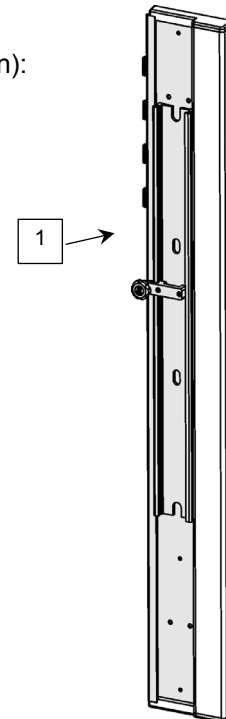
- A. It shall be the responsibility of the hospital, its consultants and/or contractors to determine that the wall is adequate for safely mounting instrumentation. This includes the selection of appropriate fasteners and the proper installation of the same.
- B. Instructions and illustrations covering the specific instrument-mounting application must be reviewed prior to installation of the wall mount.
- C. Access to instrument controls should be considered before mounting the Surface Mount. Allow clearance for objects such as over-bed lighting, privacy curtains, adjacent walls or columns, door swing arcs, etc. Power and signal outlets should also be considered when selecting a mounting location. Avoid oxygen, vacuum and air outlets and space for attendant flow meters and regulators. Do not place any portion of the mounted instrument over a patient bed.

DISCLAIMER: Although considerable effort has been made to ensure the safety of this installation and/or guidelines, the installation itself is beyond the control of GCX Corporation. Accordingly, GCX Corporation will not be responsible for the failure of any such installation.

Parts Reference

The following parts and hardware are included in this installation kit (hardware not shown):

Item #	Description	Qty
1	Channel Assembly, Variable Height	1
2	#10 x 2" Pan Head Sheet Metal Screw (PHSMS)	6
3	#12 x 2-3/4" American Screw	6
4	Nylon Cable Tie	4
5	Cord Wrap, Natural Poly (3' and 2' lengths)	5 ft.
6	1/8" Hex Wrench (for repositioning Lock Knob)	1



Tools Required for Installation of Channel

Drill, 9/64" drill bit, level, and Phillips screwdriver.

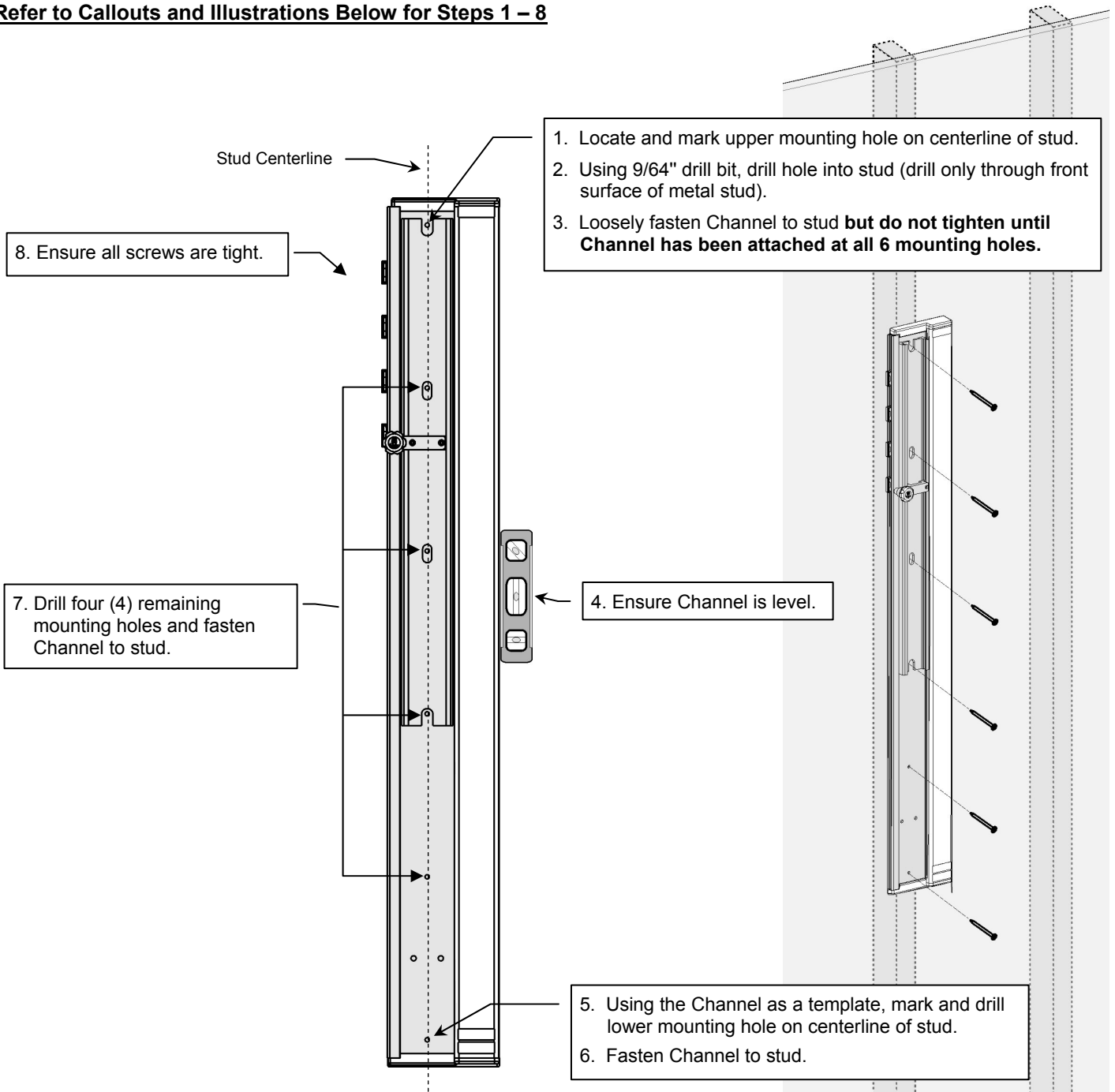
Mounting the Variable Height Channel (VHC)

CAUTION: The VHC must be fastened to a wall stud. The Channel has been tested using six (6) #10 sheet metal screws (provided) mounted in 16 ga. metal studs. Refer to table below for information regarding steel stud and other applications.
Installation Note: The VHC may also be mounted using Surface Mount Kit (p/n FWM-0001-05) which is not included in this installation kit.

Stud Type	Screw Type	Drill Bit Size for Mounting Hole
Steel	#10 x 2" Pan Head Sheet Metal Screw (provided)	9/64"
Wood	#12 x 2-3/4" American Screw (provided)	9/64"
*Wood	#10 x 4" Lag Screw (not provided)	Diameter of Screw Shank
*Masonry	1/4" Dia. Hilti KB-III Expansion Anchors (not provided)	Refer to Hilti Instructions

*Required for seismic anchorage. See California OSHPD, OPA-1665.

Refer to Callouts and Illustrations Below for Steps 1 – 8



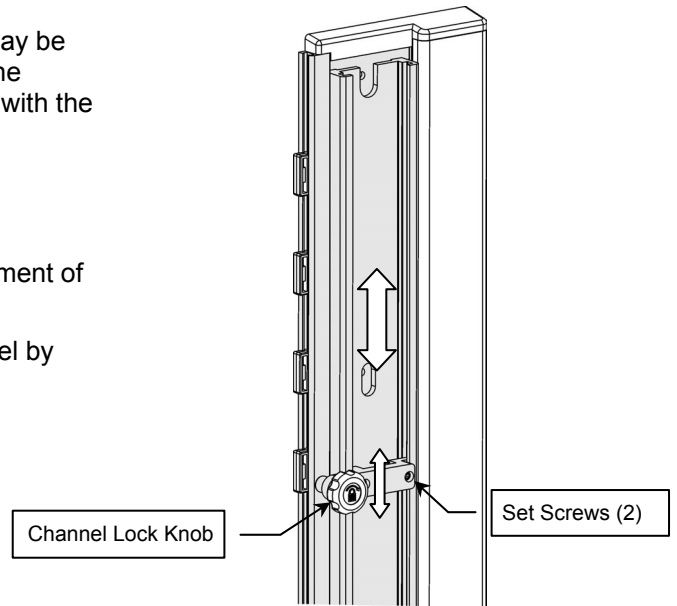
Mounting Devices in the Channel

A secondary mounting system or device with a channel slide may be inserted in the top or bottom of the Variable Height Channel. The weight of the mounting system + mounted device must comply with the load rating of the Variable Height Channel (see page 1).

Channel Lock Knob

The Channel Lock Knob may be used to prevent vertical movement of the Channel or mounted devices in the track.

The Channel Lock Knob may be repositioned within the Channel by loosening the two socket set screws (right), moving the Knob assembly, and tightening the set screws. A 1/8" hex wrench is provided for this adjustment.



Cable Management

Four (4) vertically adjustable Cable Tie Blocks (side of Channel), four (4) Nylon Cable Ties, and two lengths (3-ft and 2-ft) of poly Cord Wrap are provided for cable management.

Important: Adjust Channel to highest vertical position before routing and securing cables. This allows maximum vertical travel of cables after they have been secured to side of Channel.

Typical use of Cord Wrap, Cable Ties, and Cable Tie Blocks is shown below and right. In the close-up, a Cable Tie is looped around wrapped cables and secured to a Cable Tie Block,

